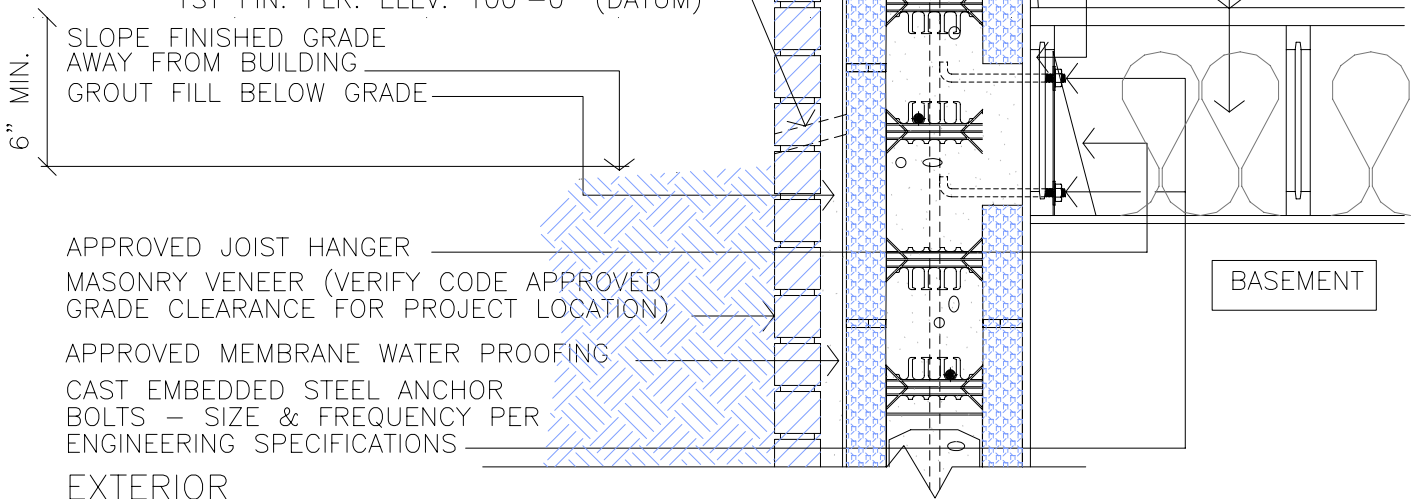


**NOTE:**

INSTALL APPROVED MEMBRANE WATER-PROOFING AT ALL SURFACES BELOW GRADE  
EXTEND 12" MIN. ABOVE FINAL GRADE

FLOOR SYSTEM PER CONSTRUCTION DRAWINGS \_\_\_\_\_  
 CONTINUOUS LEDGER BOARD \_\_\_\_\_  
 WEEP HOLES PER SECTION 703.7.6 OF THE IRC 2003 CODE \_\_\_\_\_  
 1ST FIN. FLR. ELEV. 100'-0" (DATUM)



6" MIN. \_\_\_\_\_  
 SLOPE FINISHED GRADE AWAY FROM BUILDING \_\_\_\_\_  
 GROUT FILL BELOW GRADE \_\_\_\_\_

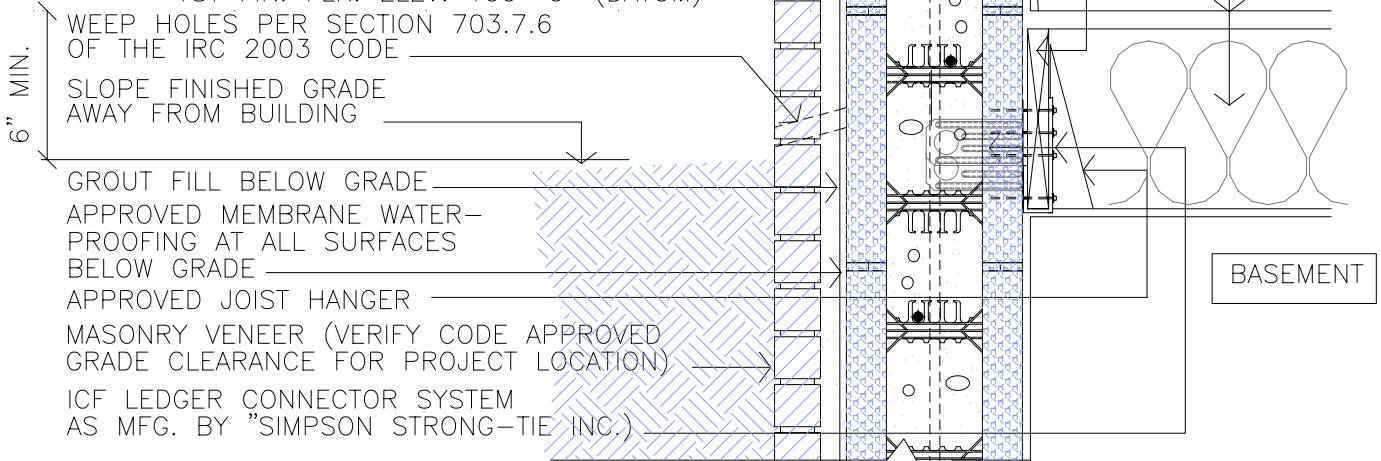
APPROVED JOIST HANGER \_\_\_\_\_  
 MASONRY VENEER (VERIFY CODE APPROVED GRADE CLEARANCE FOR PROJECT LOCATION) \_\_\_\_\_  
 APPROVED MEMBRANE WATER PROOFING \_\_\_\_\_  
 CAST EMBEDDED STEEL ANCHOR BOLTS - SIZE & FREQUENCY PER ENGINEERING SPECIFICATIONS \_\_\_\_\_

**EXTERIOR APPLICATIONS**

FLOOR SYSTEM FOR EXTERIOR APPLICATION SUCH AS WOOD OR METAL DECKS MAY USE A SIMILAR ANCHORING SYSTEM TO THOSE SHOWN ON THIS DETAIL SHEET

FLOOR SYSTEM PER CONSTRUCTION DRAWINGS \_\_\_\_\_

CONTINUOUS LEDGER BOARD \_\_\_\_\_  
 1ST FIN. FLR. ELEV. 100'-0" (DATUM)



6" MIN. \_\_\_\_\_  
 WEEP HOLES PER SECTION 703.7.6 OF THE IRC 2003 CODE \_\_\_\_\_  
 SLOPE FINISHED GRADE AWAY FROM BUILDING \_\_\_\_\_  
 GROUT FILL BELOW GRADE \_\_\_\_\_  
 APPROVED MEMBRANE WATER-PROOFING AT ALL SURFACES BELOW GRADE \_\_\_\_\_  
 APPROVED JOIST HANGER \_\_\_\_\_  
 MASONRY VENEER (VERIFY CODE APPROVED GRADE CLEARANCE FOR PROJECT LOCATION) \_\_\_\_\_  
 ICF LEDGER CONNECTOR SYSTEM AS MFG. BY "SIMPSON STRONG-TIE INC.") \_\_\_\_\_

SEE ADDITIONAL INFORMATION ABOUT "SIMPSON" PRODUCTS ONLINE - [WWW.STRONGTIE.COM](http://WWW.STRONGTIE.COM) OR CONTACT ENGINEERING SUPPORT @ 1-800-999-5099

2 / 14 ALTERNATE SECTION DETAIL  
 SCALE: 1" = 1'-0"

1 / 14 SECTION DETAIL  
 SCALE: 1" = 1'-0"

**NOTE:**  
 DUE TO VARIATIONS IN SELECTED PRINTER SETTINGS, NOTED SCALES MAY NO LONGER BE APPLICABLE



9701 N. Broadway Extension Office (405) 840-3386  
 Oklahoma City, Oklahoma 73114 Fax (405) 840-0625  
[www.buildblock.com](http://www.buildblock.com) Toll Free 1-866-222-2575

**TYPICAL FLOOR INTERSECTIONS**

DATE / REVISION	11-17-09	DETAIL SHEET <b>14</b>
SCALE	AS NOTED	
FILE NAME	BBDTL-14.AEC	

Construction shall be built in accordance with all applicable local and national building codes. All drawings are subject to change without notice.