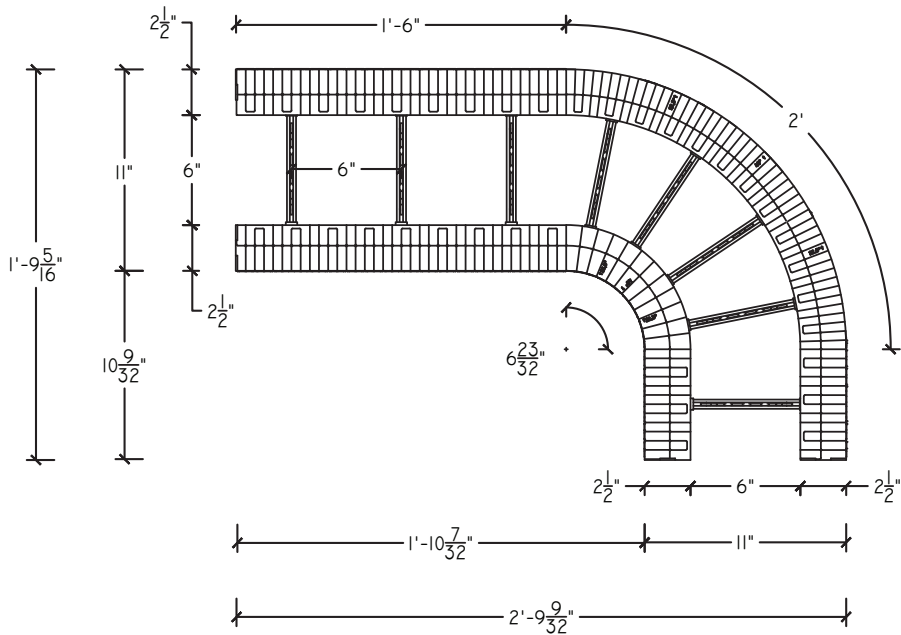
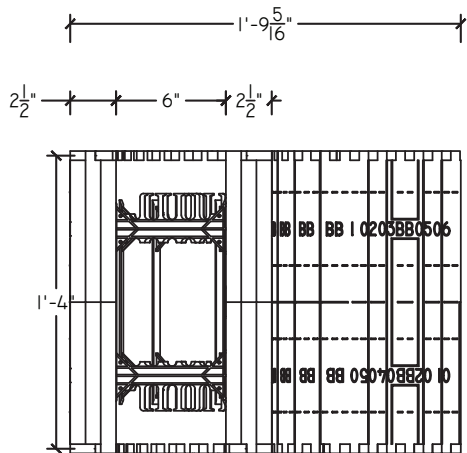


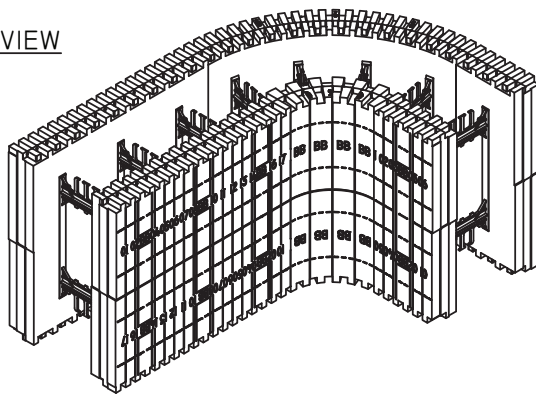
1
XX TOP VIEW
SCALE: NTS



2
XX SIDE VIEW
SCALE: NTS



3
XX PERSPECTIVE VIEW
SCALE: NTS



NOTES:

BUILDRADIUS FORMS ARE SIZED BY THE LENGTH OF THE OUTER PANEL AT A 90° ARC. THE RADIUS AND DIAMETER OF THE FORMS ARE GIVEN IN THE ACCOMPANYING CHART. THIS FORM INTEGRATES WITH STRAIGHT FORMS AND DOES NOT REQUIRE CUTTING TO PROVIDE 12 INCH OFFSET. BLOCK COURSING IS 1'-4".

2FT BUILDRADIUS FORM SPECIFICATIONS		
	IMPERIAL	METRIC
BLOCK ANGLE	90°	90°
OUTSIDE PANEL AREA	5.33FT ²	0.4951m ²
INSIDE PANEL AREA	4.19FT ²	0.4561m ²
OUTER PANEL ARC LENGTH	2-FT 0-IN	60.96CM
INNER PANEL ARC LENGTH	1-FT 8-3/16-IN	51CM
OUTER RADIUS	1-FT 3-1/4-IN	38.81CM
INNER RADIUS	0-FT 8-1/2-IN	10.97CM
STRAIGHT SECTION LENGTHS	6-IN / 18-IN	15.2CM / 45.7CM
CONCRETE VOLUME	0.065296 YD ³	0.043041 m ³



9705 N. BROADWAY EXTENSION, SUITE 200, OKLAHOMA CITY, OK 73114
OFFICE: 405-840-3386 | TOLL FREE: 866-222-2575 | FAX: 831-597-0792
BUILDBLOCK.COM

BUILDRADIUS 2-FOOT ARC RADIUS PRODUCT DETAIL

DATE/REV 8/2016 SCALE NTS

DETAIL SHEET

NOTES

CONSTRUCTION SHALL BE IN ACCORDANCE WITH ALL APPLICABLE LOCAL AND NATIONAL CODES. ALL DRAWINGS ARE SUBJECT TO CHANGE WITHOUT NOTICE.

65A