

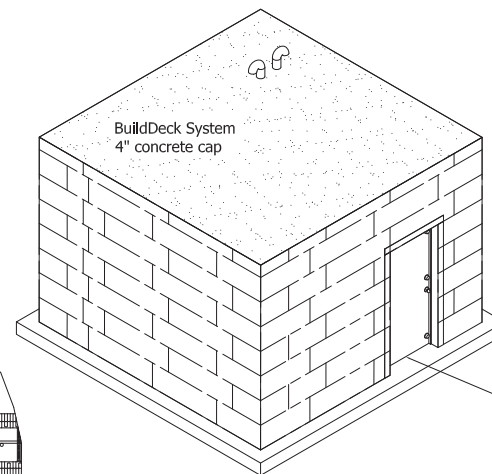
# KEEP YOUR FAMILY SAFE FROM DISASTER WITH BUILDBLOCK SAFEROOMS

Upgrade your master closet, pantry, or bathroom to an ICF safe room and protect your most valuable assets.

**CONTACT BUILDBLOCK**  
**866-222-2575**

MENTION NDGSAFE FOR GREATER SAVINGS

Make your home a safe home.  
*Build it once. Build it for life.*



**FEMA Door Specifications:**  
12ga or 14ga Steel Skin (Field Applied)  
3 Point lock.  
See FEMA 320 for reinforcement details.

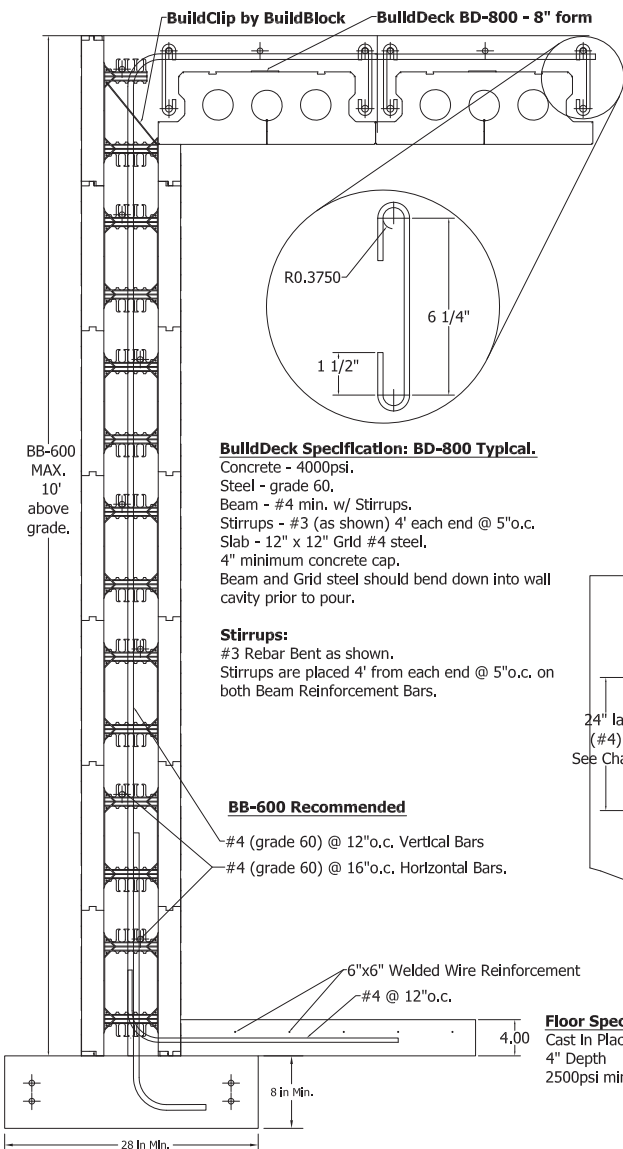
**General Specifications:**  
All Concrete should be 3000psi min. (except where noted)  
All Steel should be grade 60 Min.

**Lap Splice Lengths:**  
#4 - 24"  
#5 - 30"  
#6 - 36"

**Rebar protection (Concrete Cover):**  
Concrete placed against earth - 3"  
Concrete placed in removable forms - 1-1/2"  
Concrete in ICF forms - 3/4" (PCA100 - 2.5.1)

**Maximum Dimensions with this Document:**  
Maximum wall length - 12' interior dimension.  
Maximum wall height - 6" flat wall - 10' (Above Grade)

**Signage:**  
1. Install a plaque, sign or other marking to clearly identify:  
250 MPH, 3 Sec gust Safe Room Design Wind Speed  
Missile Impact Resistance Rating for:  
A. 15lb 2x4 travelling Horizontally at 100 MPH  
B. 15lb 2x4 travelling Vertically at 67 MPH  
C. Name of shelter manufacturer or builder.  
2. The sign shall be mounted on the inside wall of the safe room in a prominent location 60" above the floor.



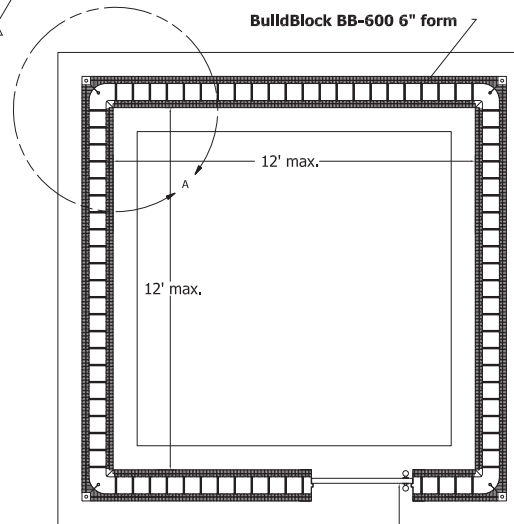
**BuildDeck Specification: BD-800 Typical.**  
Concrete - 4000psi.  
Steel - grade 60.  
Beam - #4 min. w/ Stirrups.  
Stirrups - #3 (as shown) 4" each end @ 5"o.c.  
Slab - 12" x 12" Grid #4 steel,  
4" minimum concrete cap.  
Beam and Grid steel should bend down into wall cavity prior to pour.

**Stirrups:**  
#3 Rebar Bent as shown.  
Stirrups are placed 4" from each end @ 5"o.c. on both Beam Reinforcement Bars.

**BB-600 Recommended**  
#4 (grade 60) @ 12"o.c. Vertical Bars  
#4 (grade 60) @ 16"o.c. Horizontal Bars.

**Floor Specification:**  
Cast In Place Concrete Floor  
4" Depth  
2500psi min.

**Footing Specifications:**  
28" wide min.  
8" thick min.  
Base of footing min 12" below grade. (IRC R403.1.3.2)  
Top of footing must be at frost line. (IRC R403.1.4.1)



FEMA approved Safe Room jamb, door, and lock.



OFFICE: 405-840-3386 | TOLL FREE: 866-222-2575 | FAX: 831-597-0792  
BUILDBLOCK.COM

This design incorporates BuildBlock Insulating Concrete Forms and BuildDeck Floor & Roof System to create a safe room structure that complies with FEMA 320 specifications.

CONSTRUCTION SHALL BE IN ACCORDANCE WITH ALL APPLICABLE LOCAL AND NATIONAL CODES. ALL DRAWINGS ARE SUBJECT TO CHANGE WITHOUT NOTICE.

DATE	5/30/2013	REVISION	1
SCALE	NTS	FILENAME	AGSR-Detail-01.dwg
NOTES			

**SAFE ROOM PACKAGES AVAILABLE**