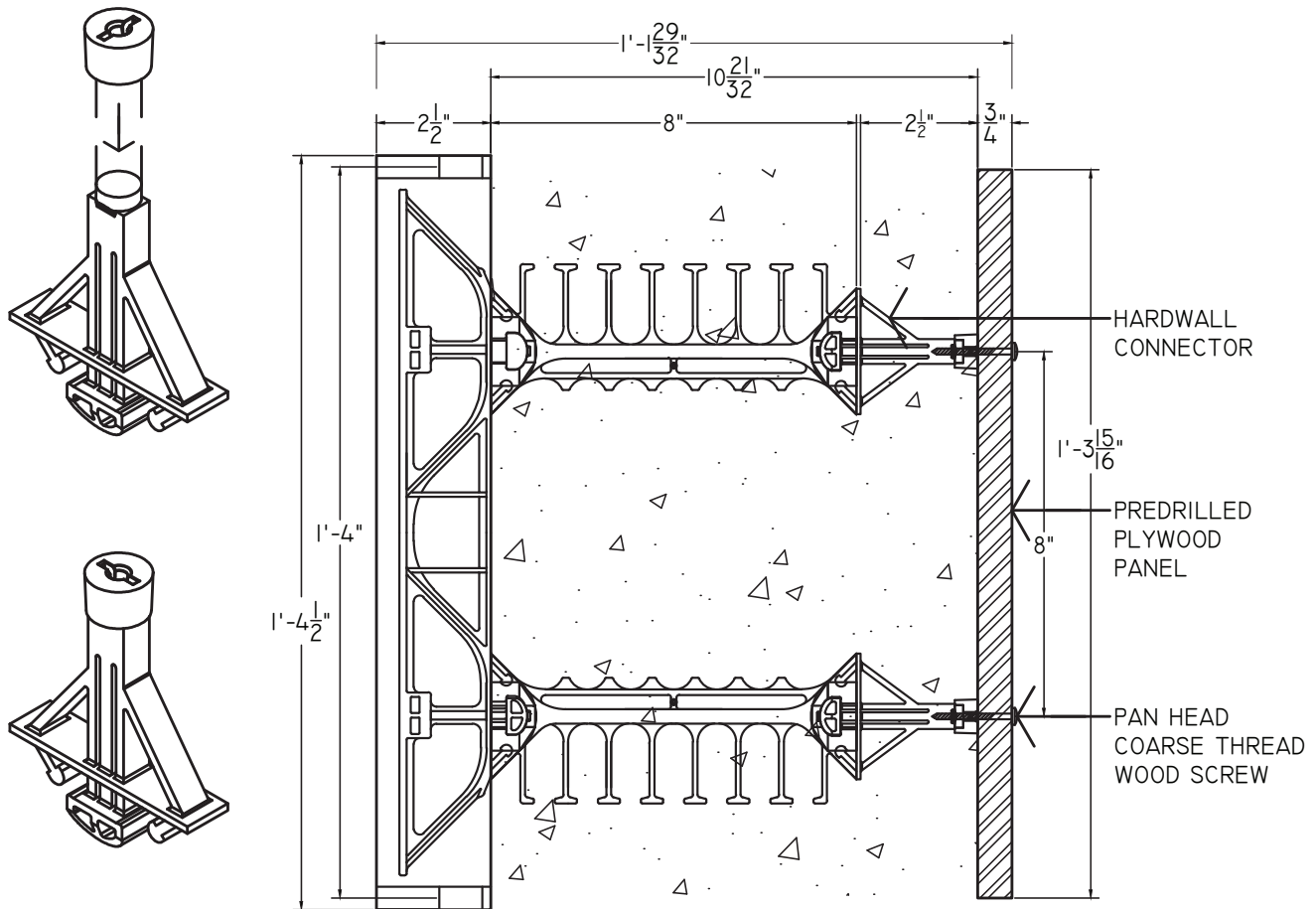



**HARDWALL CONNECTOR ASSEMBLY:**

1. SEPARATE THE WASHER CAP FROM THE HARDWALL CONNECTOR BY REMOVING THE SMALL TAB CONNECTING THE 2 PARTS.
2. PRESS THE CUP OF THE WASHER CAP ONTO THE END OF THE HARDWALL CONNECTOR FULLY.
3. TO FULLY EMBED THE CONNECTOR INTO THE WASHER IT MAY BE NECESSARY TO PRESS IT FIRMLY AGAINST A HARD SURFACE.
4. MAKE SURE TO ORIENT BRIDGES CORRECTLY BEFORE CONNECTING TO BUILDLOCK PANELS.
5. ATTACH THE WEB BRIDGES TO THE BUILDLOCK PANEL BY POSITIONING THEM OVER THE LOCKING TABS ON THE INNER FACE OF THE PANEL. A SHARP BLOW MAY BE REQUIRED TO FULLY SEAT THEM.
6. ATTACH THE HARDWALL CONNECTOR WITH THE WASHER CAP IN PLACE TO THE WEB BRIDGES, OPPOSITE THE FOAM PANEL.
7. PREFERRED METHOD: WHEN THE FOAM, BRIDGE, AND HARDWALL CONNECTOR ARE ASSEMBLED, PLACE A PRE-CUT AND DRILLED SHEET OF PLYWOOD OR OTHER FORMING MATERIAL AGAINST THE WASHER CAP FACES. BEGIN FASTENING THEM TOGETHER USING 1-5/8" COARSE THREAD PAN HEAD SCREWS. THE HOLES IN THE WASHER CAP ARE EASILY ALIGNED WITH THE DRILLED SCREW HOLES. THE SELF ALIGNING WASHER CAP POSITIONS THE SCREW IN THE CENTER OF THE CONNECTOR.
8. ALTERNATE METHOD: ASSEMBLE THE HARDWALL CONNECTOR AND WASHER CAP AND ATTACH TO THE PLYWOOD PANEL WITH 1-5/8" COARSE THREAD PAN HEAD SCREWS. LOCK THE ASSEMBLED PANEL TO THE FOAM PANEL WITH THE WEB BRIDGES. WHEN USING THIS METHOD, IT IS IMPERATIVE TO AVOID BENDING OR BREAKING THE SCREWS WHILE MOVING THE PLYWOOD PANEL ONCE ASSEMBLED. IT MAY ALSO BE NECESSARY TO RE-ORIENT THE HARDWALL CONNECTOR BODY TO ALIGN WITH THE WEB BRIDGES, AS IT MAY TURN WHEN TIGHTENING THE SCREWS.



ALL PLYWOOD FOR FORMS SHOULD BE CUT 1/8" SHORT IN LENGTH TO ACCOUNT FOR THE NATURAL ICF FORM SHRINKAGE. HEIGHT MAY BE REDUCED 1/16" TO ACCOUNT FOR SHRINKAGE AND COMPRESSION. STANDARD ICF BRACING AND ALIGNMENT SHOULD BE INSTALLED ON THE WOOD SIDE. FOLLOW ALL MANUFACTURER RECOMMENDATIONS FOR INSTALLATION OF ICF BRACING.

|  |                                     |  |       |     |                                 |
|--|-------------------------------------|--|-------|-----|---------------------------------|
|   | <b>BUILDBLOCK HARDWALL ASSEMBLY</b> |  |       |     | DETAIL SHEET                    |
|  | DATE/REV                            | 12/2015  | SCALE | NTS | <h1 style="margin: 0;">64C</h1> |
|  | NOTES                               |  |       |     |                                 |
| 9705 N. BROADWAY EXTENSION, SUITE 200, OKLAHOMA CITY, OK 73114<br>OFFICE: 405-840-3386   TOLL FREE: 866-222-2575   FAX: 831-597-0792<br>BUILDBLOCK.COM |                                     | CONSTRUCTION SHALL BE IN ACCORDANCE WITH ALL APPLICABLE LOCAL AND NATIONAL CODES. ALL DRAWINGS ARE SUBJECT TO CHANGE WITHOUT NOTICE. |       |     |                                 |