

BUILDBLOCK HARDWALL FINISH OPTIONS

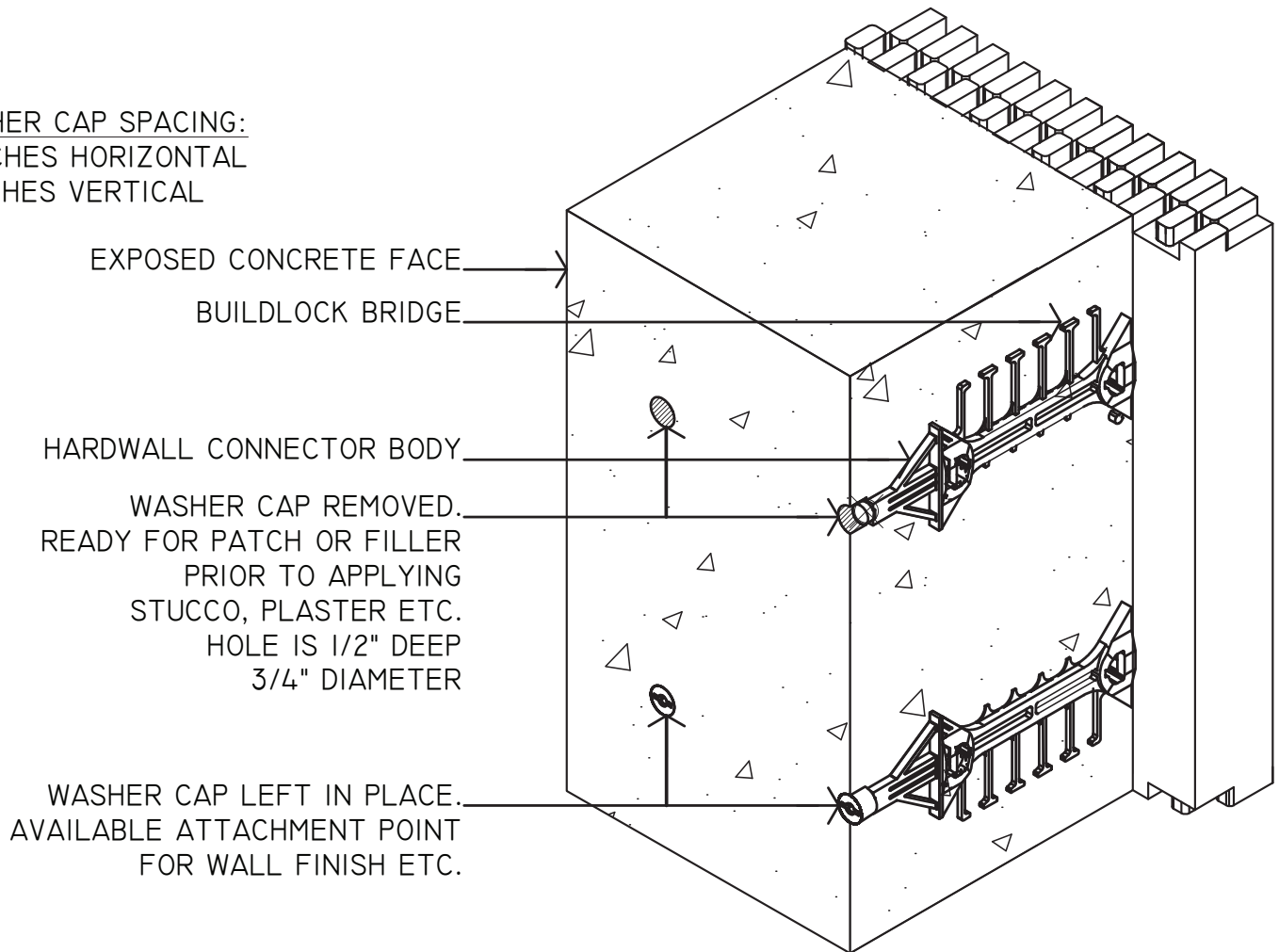
ONCE THE PLYWOOD IS REMOVED THE WASHER CAPS WILL BE VISIBLE IN THE FACE OF THE CONCRETE.


IF THIS IS THE DESIRED FINISH THE CAPS MAY BE LEFT IN PLACE TO INDICATE ATTACHMENT POINTS IN THE WALL. ATTACH OTHER FINISHES AS DESIRED.

TO REMOVE WASHER CAPS, USE A LARGE FLAT BLADE SCREWDRIVER TO TWIST AND PULL THE WASHER CAP OUT OF THE CAVITY. THE WASHER CAP IS BEVELED AND WILL RELEASE FROM THE CONCRETE. IF NECESSARY THE WASHER CAPS MAY BE REMOVED BY HAND, WITH A SMALL PICK, OR PLIERS. THE HARDWALL BODY WILL REMAIN EMBEDDED IN THE WALL.

TO FINISH THE ENTIRE WALL WITH STUCCO, PLASTER, OR OTHER FINISH, REMOVE CAPS AND FILL REMAINING CAVITY WITH PATCH, OR A SUITABLE CONCRETE FILLER AND TROWEL SMOOTH PRIOR TO APPLYING THE WALL FINISH ACCORDING TO MANUFACTURER SPECIFICATIONS.

WASHER CAP SPACING:
6 INCHES HORIZONTAL
8 INCHES VERTICAL



	BUILDBLOCK HARDWALL FINISHING				
	DATE/REV	12/2015	SCALE	NTS	DETAIL SHEET
	NOTES				64E
9705 N. BROADWAY EXTENSION, SUITE 200, OKLAHOMA CITY, OK 73114 OFFICE: 405-840-3386 TOLL FREE: 866-222-2575 FAX: 831-597-0792 BUILDBLOCK.COM		CONSTRUCTION SHALL BE IN ACCORDANCE WITH ALL APPLICABLE LOCAL AND NATIONAL CODES. ALL DRAWINGS ARE SUBJECT TO CHANGE WITHOUT NOTICE.			