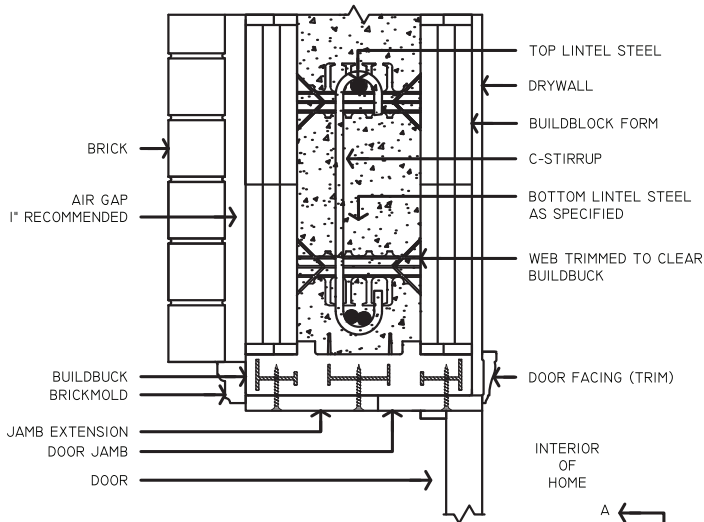


SECTION: AA DOOR LINTEL



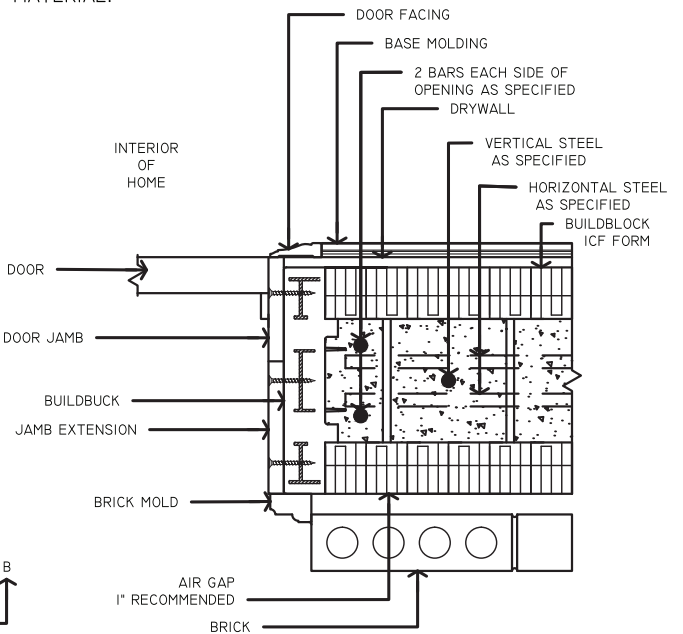
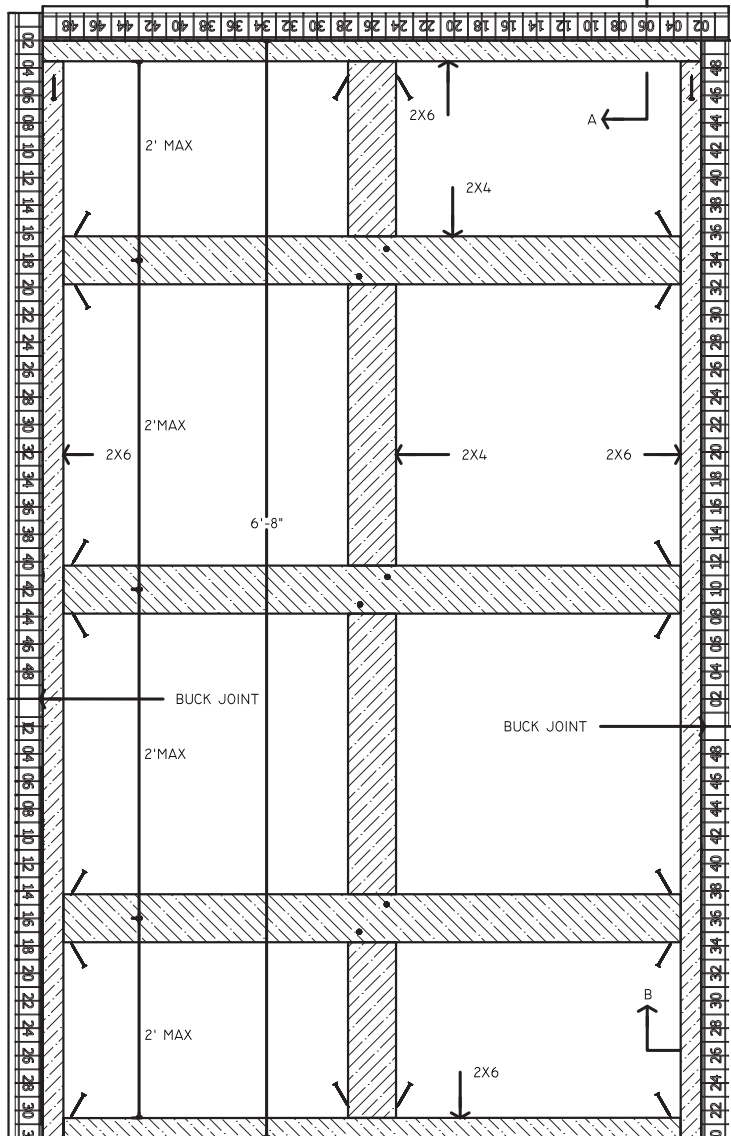
LINTELS (HEADERS ABOVE DOORS AND WINDOWS) SHOULD BE DESIGNED IN ACCORDANCE WITH SITE SPECIFIC ENGINEERING, BUILDBLOCK ENGINEERING MANUAL, PCA-100, THE PRESCRIPTIVE METHOD, OR OTHER APPLICABLE CODES OR ENGINEERING. HORIZONTAL LINTEL STEEL SHOULD EXTEND 2FT PAST EACH SIDE OF AN OPENING FOR BOTH TOP AND BOTTOM BARS. TOP LINTEL BAR IS TYPICALLY THE TOP HORIZONTAL BAR IN THE WALL, AND RUNS FULL LENGTH OF THE WALL IN THE TOP COURSE. "C" OR "S" STIRRUPS ARE USED TO SUPPORT BOTTOM BARS, AND SHOULD EXTEND FROM TOP REBAR TO WITHIN 1" TO 2" OF THE BOTTOM OF THE LINTEL. CENTER DISTANCE OF STIRRUPS IS SPECIFIED IN THE LINTEL TABLES IN THE ENGINEERING SOURCE. MAINTAIN CONCRETE COVERAGE OVER STIRRUPS, MINIMUM 3/4" FROM BACK OF BUCK TO STIRRUP. 1" IS RECOMMENDED.

DOOR INSTALLATION WITH BUILDBUCK:

DUE TO THE THICKNESS OF ICF WALL SYSTEMS, A JAMB EXTENDER OR ADDITIONAL TRIM WILL BE REQUIRED TO FULLY TRIM THE DOOR JAMBS. THESE MAY BE AVAILABLE FROM THE MANUFACTURER, OR BUILT ONSITE BY CONTRACTOR. DOOR MANUFACTURERS MAY HAVE OPTIONS FOR WIDER JAMBS WHEN ORDERING DOORS.

ALL HARDWARE SCREWS MUST BE SIZED TO EXTEND THROUGH THE MOLDED ATTACHMENT POINTS BY 1/2". THESE ARE LOCATED 3/4" BELOW THE FACE OF THE FOAM. ADD 1-1/4" TO THE THICKNESS OF JAMB MATERIAL FOR PROPER SCREW SIZING.

TAPCON OR RED-HEAD FASTENERS MAY BE USED TO FURTHER REINFORCE THE JAMBS, BY EMBEDDING INTO THE CONCRETE CORE OF THE WALL. FOR COMMERCIAL APPLICATIONS, OR HEAVY DUTY INSTALLATIONS, THE CONCRETE INSPECTION WINDOWS ON THE BUCK MAY BE REMOVED PRIOR TO POURING, ALLOWING THE CONCRETE TO FULLY FILL TO THE FACE OF THE BUCK. THIS PROVIDES A MORE DIRECT CONNECTION TO THE CONCRETE CORE, AND ADDITIONAL SUPPORT FOR JAMB MATERIAL. BRACING FOR OPENING SHOULD COVER THESE HOLES, ALLEVIATING THE NEED FOR ADDITIONAL FORMING MATERIAL.



SECTION: BB TOP DOWN VIEW



9705 N. BROADWAY EXTENSION, SUITE 200, OKLAHOMA CITY, OK 73114
 OFFICE: 405-840-3386 | TOLL FREE: 866-222-2575 | FAX: 831-597-0792
 BUILDBLOCK.COM

BUILDBUCK DOOR INSTALLATION DETAIL

DATE/REV	12/2015	SCALE	NTS	DETAIL SHEET
----------	---------	-------	-----	--------------

NOTES

CONSTRUCTION SHALL BE IN ACCORDANCE WITH ALL APPLICABLE LOCAL AND NATIONAL CODES. ALL DRAWINGS ARE SUBJECT TO CHANGE WITHOUT NOTICE.

621