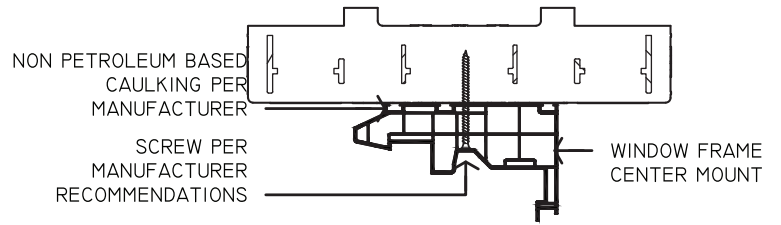
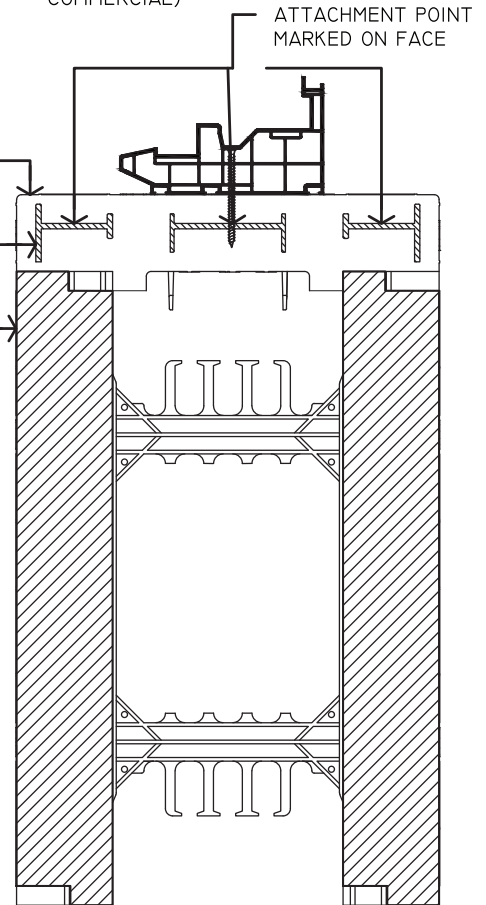
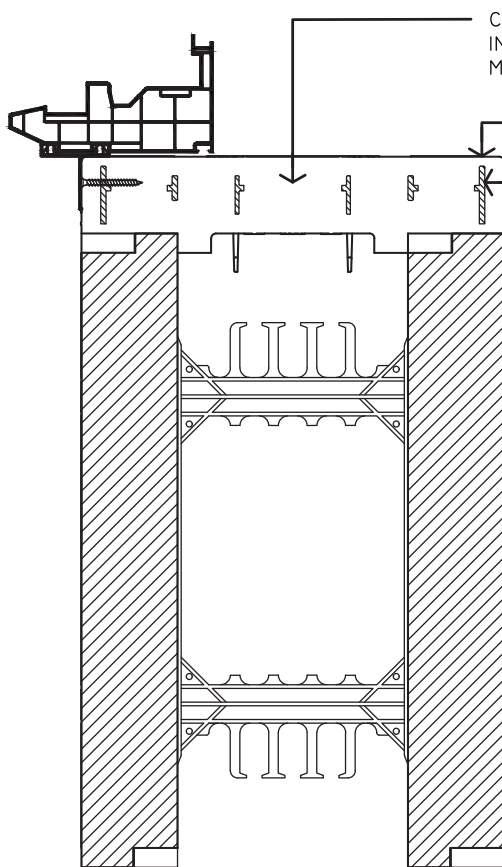


FLANGE MOUNT
(NEW CONSTRUCTION)



FACE MOUNT
(REPLACEMENT /
COMMERCIAL)



WINDOWS MAY BE INSTALLED EITHER AS A NEW CONSTRUCTION (FLANGED) WINDOW, OR A COMMERCIAL / REPLACEMENT (NON-FLANGED) WINDOW. FLANGED WINDOWS SHOULD BE INSTALLED TO THE OUTSIDE OF THE BUCK, USING THE SIDE ATTACHMENT POINT AS THE NAILER. WINDOWS WITHOUT A FLANGE SHOULD USE THE FACE ATTACHMENT POINTS, WHICH ARE MARKED BY BOUNDING BOXES ON THE FACE OF THE BUCK. USE SCREWS RECOMMENDED BY THE WINDOW MANUFACTURER, AND LONG ENOUGH TO EXTEND 1/2" INTO THE ATTACHMENT POINTS



9705 N. BROADWAY EXTENSION, SUITE 200, OKLAHOMA CITY, OK 73114
OFFICE: 405-840-3386 | TOLL FREE: 866-222-2575 | FAX: 831-597-0792
BUILDBLOCK.COM

BUILDBUCK WINDOW MOUNTING RECOMMENDATIONS

DATE/REV	12/2015	SCALE	NTS	DETAIL SHEET
----------	---------	-------	-----	--------------

NOTES

CONSTRUCTION SHALL BE IN ACCORDANCE WITH ALL APPLICABLE LOCAL AND NATIONAL CODES. ALL DRAWINGS ARE SUBJECT TO CHANGE WITHOUT NOTICE.

62H