

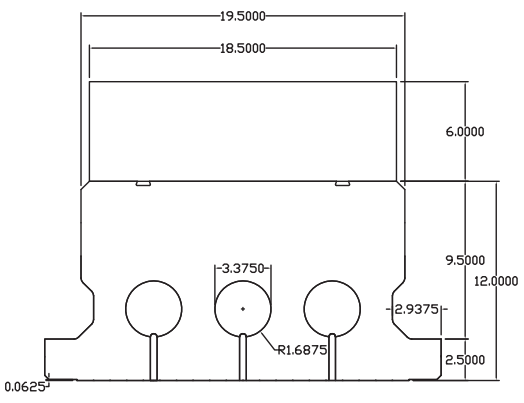
BuildDeck  
BD-1200

#5 Steel 1' O.C. parallel  
to concrete beam

#3 Steel 1' O.C. perpendicular  
to concrete beam

See "Stirrup  
Details" page  
for specs.

NOTE: Remove foam as  
necessary to maintain  
min. 3/4" concrete  
coverage on all steel.

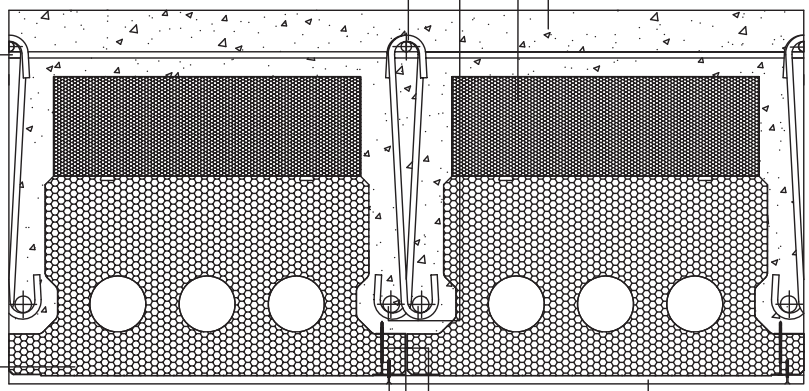


Beam Steel Spec'd  
by Engineer of Record

6" EPS Riser

#3 Stirrup @ 9" O.C.

Concrete Top Cap



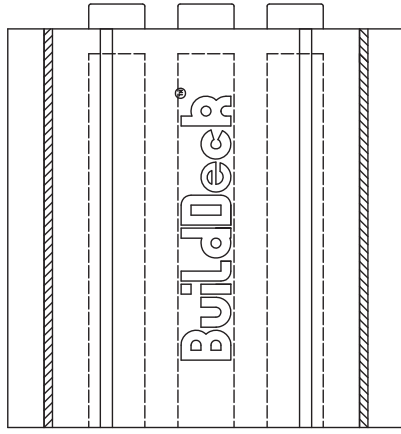
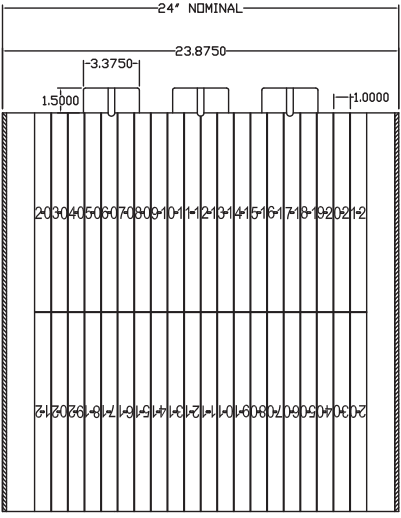
#8 Course Thread Drywall Screw

Optional 3.25"  
screw installed  
from below

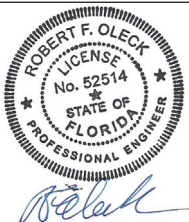
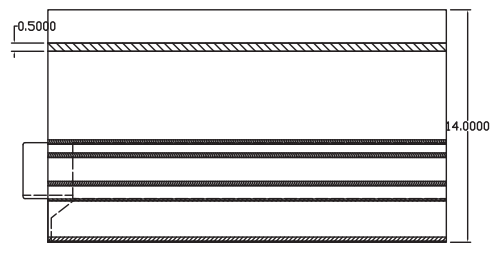
Sheetrock

(BuildDeck Panel + Steel Attach. Strip)  
24" NOMINAL

BuildDeck  
BD-1200



Note:  
All concrete and steel  
design must be  
approved by the  
project specific  
Engineer of Record



9705 N. BROADWAY EXTENSION, SUITE 200, OKLAHOMA CITY, OK 73114  
OFFICE: 405-840-3386 | TOLL FREE: 866-222-2575 | FAX: 831-597-0792  
BUILDBLOCK.COM

BUILDDECK 12" + 6" FOAM TOP HAT

DATE/REV	11-17-09	SCALE	NTS	DETAIL SHEET
----------	----------	-------	-----	--------------

NOTES	BD-12+2
-------	---------

CONSTRUCTION SHALL BE IN ACCORDANCE WITH ALL APPLICABLE LOCAL AND NATIONAL CODES. ALL DRAWINGS ARE SUBJECT TO CHANGE WITHOUT NOTICE.

51