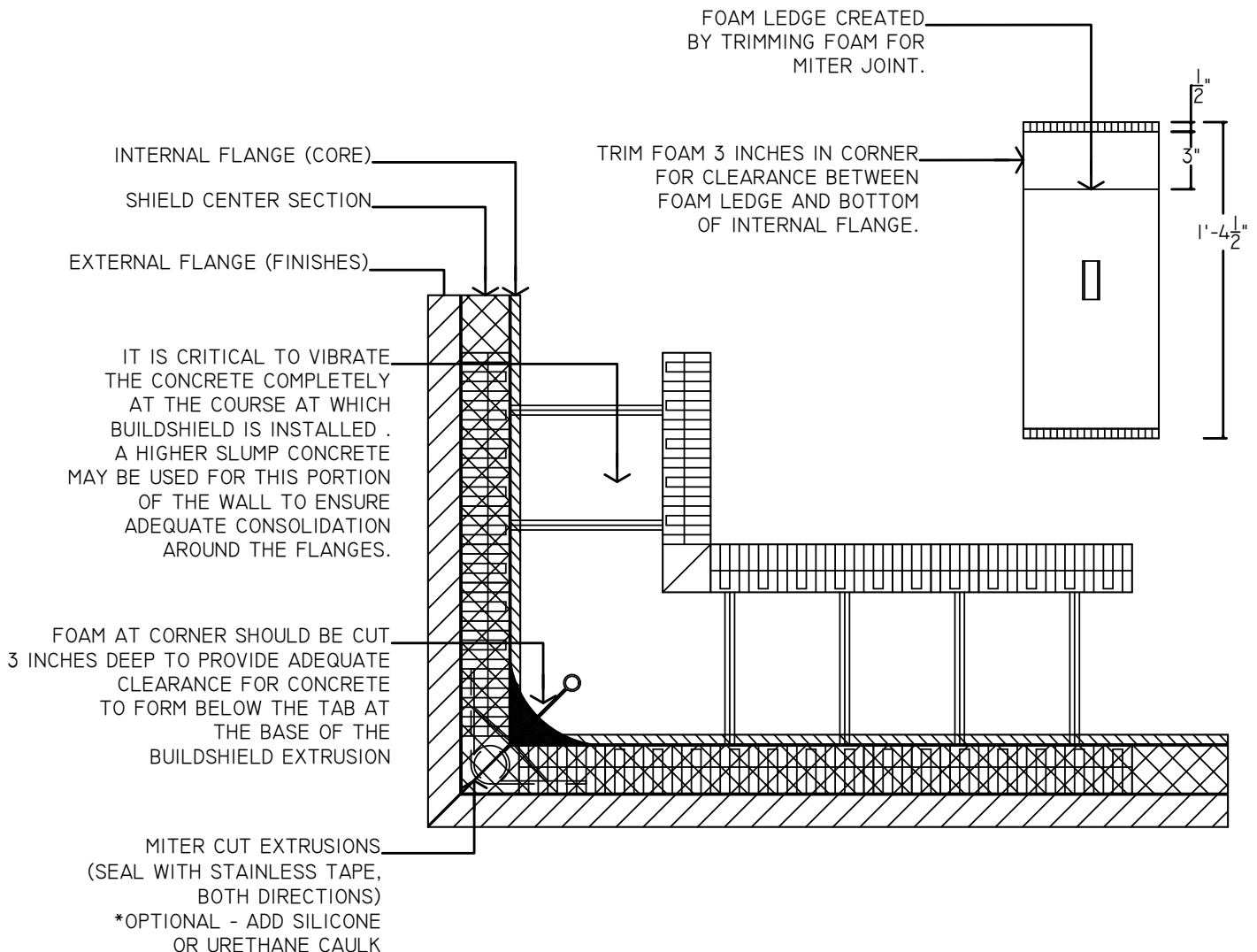



1. BEGIN ALL BUILDSHIELD INSTALLATIONS AT THE CORNERS.
2. THE CORNER FORMS IMMEDIATELY ABOVE AND BELOW THE BUILDSHIELD INSTALLATION MUST BE PREPARED PRIOR TO INSTALLING BUILDSHIELD.
3. THE INTERNAL FOAM RADIUS IN THE CORNER FORMS SHOULD BE CUT OUT TO PROVIDE ADEQUATE CLEARANCE FOR BUILDSHIELD EXTRUSIONS. THE CUTS SHOULD BE MADE 3" DEEP, AND SHOULD MAINTAIN THE PANEL THICKNESS AT 2-1/2" INTO THE CORNER.
4. MAKE ALL CUTS AWAY FROM THE STACKED FORMS, TO AVOID FILLING THE CORES WITH FOAM PIECES OR BEADS.
5. BUILDSHIELD EXTRUSIONS SHOULD HAVE A MITER CUT, MADE ON A MITER SAW OR IN A MITER BOX.
6. MITER JOINTS SHOULD HAVE STAINLESS STEEL BARRIERS OVERLAP FROM EACH DIRECTION, AND BARRIERS SHOULD BE FULLY BONDED TOGETHER, BY REMOVING THE ADHESIVE PAPER FROM THE BOTTOM BARRIER. TAKE CARE TO AVOID ANY BUBBLES OR WRINKLES. READ FULL INSTALLATION INSTRUCTIONS BEFORE BEGINNING.
7. WHEN POURING WALLS, IT IS NECESSARY TO FULLY VIBRATE THIS AREA, TO ENSURE THAT CONCRETE IS PROPERLY CONSOLIDATED AROUND THE FLANGE. ADDITIONALLY, SLIGHTLY HIGHER SLUMP CONCRETE (THINNER) MAY BE USED TO HELP ASSURE COMPLETE CONSOLIDATION AROUND THE FLANGES. DO NOT EXCEED A 6" TO 7" SLUMP.



	<b>BUILDSHIELD CORNER FORM MODIFICATION</b>				
	DATE/REV	12/2015	SCALE	NTS	DETAIL SHEET
	NOTES				<b>63C</b>
9705 N. BROADWAY EXTENSION, SUITE 200, OKLAHOMA CITY, OK 73114 OFFICE: 405-840-3386   TOLL FREE: 866-222-2575   FAX: 831-597-0792 BUILDBLOCK.COM		CONSTRUCTION SHALL BE IN ACCORDANCE WITH ALL APPLICABLE LOCAL AND NATIONAL CODES. ALL DRAWINGS ARE SUBJECT TO CHANGE WITHOUT NOTICE.			