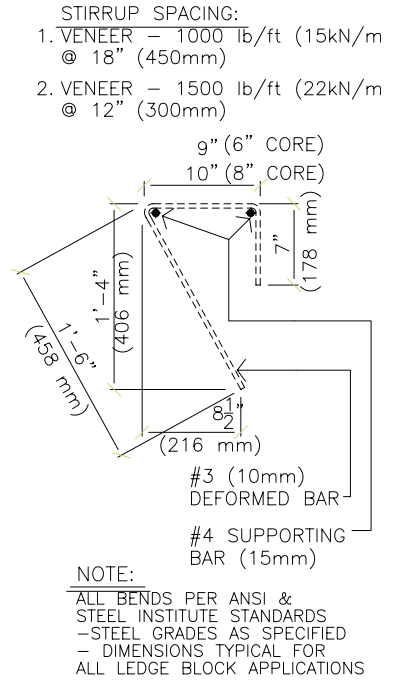


BUILDBLOCK® BUILDING SYSTEMS CANADIAN ENGINEERING TABLES

IMPERIAL STEEL / IMPERIAL SPACING / lb/ft

Wall Height	Backfill Height	Vertical Reinforcement		
		#5@18"	#5@12"	#5@6"
8'-0"	4'-6"	890	1500	1500
	5'-3"	890	1500	1500
	6'-6"	820	1500	1500
	7'-3"	0	1220	1500
9'-0"	4'-6"	890	1500	1500
	5'-3"	820	1500	1500
	6'-6"	820	1500	1500
	7'-3"	0	1220	1500
	7'-9"	0	1220	1500
	8'-6"	0	1220	1500
10'-0"	4'-6"	890	1500	1500
	5'-3"	820	1500	1500
	6'-6"	820	1500	1500
	7'-3"	0	1220	1500
	7'-9"	0	1220	1500
	8'-6"	0	1220	1500
	9'-4"	NA	NA	1500



BuildBlock Building Systems Typical Veneer Weight (Lb/ft)		
Height (ft)	3½" brick	4" stone/concrete
8	290	400
10	360	500
12	440	600
14	510	700
16	580	800
18	660	900
20	730	1000
22	800	1100
24	880	1200
26	950	1300
28	1020	1400
30	1090	1500

Notes:

Table derived from NBC/OBC 9.15.4.5. Conditions of 9.15 apply.
 Table shows maximum weight of veneer for each combination of wall height, backfill height and vertical reinforcement.
 Check weight of veneer from side table.
 Provide vertical reinforcement shown for selected wall height, backfill height and veneer weight.
 Provide horizontal reinforcement #4@16" for all walls.





9701 N. Broadway Extension
 Oklahoma City, Oklahoma 73114
www.buildblock.com

Office: (405) 840-3386
 Fax: (831) 597-0792
 Toll Free: 1(866) 222-2575

Below Grade 6" Walls with
 Brick Ledges
 Maximum Weight of Brick
 Veneer (lb/ft)

TABLE NUMBER
6-C