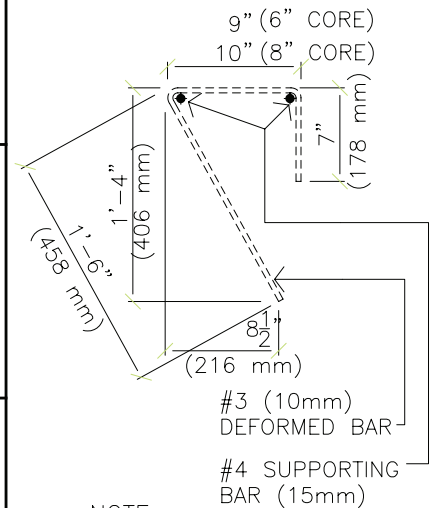


# BUILDBLOCK® BUILDING SYSTEMS CANADIAN ENGINEERING TABLES

## METRIC STEEL / METRIC SPACING / kN/m

Wall Height	Backfill Height (ft) (m)		Vertical Reinforcement			
			10M@300	15M@450	15M@300	15M@150
8'-0" 2.44 m	4'-6"	1.35	22	22	22	22
	5'-3"	1.60	22	22	22	22
	6'-6"	2.00	22	22	22	22
	7'-3"	2.20	22	22	22	22
9'-0" 2.75 m	4'-6"	1.35	22	22	22	22
	5'-3"	1.60	22	22	22	22
	6'-6"	2.00	22	22	22	22
	7'-3"	2.20	8	18	22	22
	7'-9"	2.35	0	10	22	22
8'-6"	2.60	0	10	22	22	
10'-0" 3 m	4'-6"	1.35	22	22	22	22
	5'-3"	1.60	22	22	22	22
	6'-6"	2.00	22	22	22	22
	7'-3"	2.20	8	18	22	22
	7'-9"	2.35	0	10	22	22
	8'-6"	2.60	NA	NA	16	22
	9'-4"	2.85	NA	NA	16	22

- STIRRUP SPACING:
- VENEER – 1000 lb/ft (15kN/m) @ 18" (450mm)
  - VENEER – 1500 lb/ft (22kN/m) @ 12" (300mm)



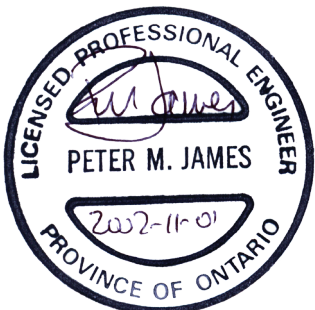
NOTE:  
ALL BENDS PER ANSI &  
STEEL INSTITUTE STANDARDS  
-STEEL GRADES AS SPECIFIED  
- DIMENSIONS TYPICAL FOR  
ALL LEDGE BLOCK APPLICATIONS

**Notes:**

Table derived from NBC/OBC 9.15.4.5. Conditions of 9.15 apply.  
Table shows maximum weight of veneer for each combination of wall height, backfill height and vertical reinforcement.  
Check weight of veneer from side table.  
Provide vertical reinforcement shown for selected wall height, backfill height and veneer weight.  
Provide horizontal reinforcement 10M@405 for all walls.

**BuildBlock Building Systems  
Typical Veneer Weight (kN/m)**

Height (m)	3½" brick	4" stone/concrete
2.4	4.5	6
3	5.5	7.5
4	7	10
5	9	12
6	11	15
7	12	17
8	14	20
9	16	22



NOVATECH ENGINEERING



9701 N. Broadway Extension  
Oklahoma City, Oklahoma 73114  
www.buildblock.com

Office: (405) 840-3386  
Fax: (831) 597-0792  
Toll Free: 1(866) 222-2575

Below Grade 200mm Walls  
with Brick Ledges  
Maximum Weight of Brick  
Veneer (kN/m)

TABLE NUMBER

7-B