

- MINIMUM SPACING:**
1. VENEER – 1000 lb/ft (15kN/m) @ 18" (450mm)
 2. VENEER – 1500 lb/ft (22kN/m) @ 12" (300mm)

NOTE:
 ALL BENDS PER ANSI &
 STEEL INSTITUTE STANDARDS
 – STEEL GRADES AS SPECIFIED
 – DIMENSIONS TYPICAL FOR
 ALL LEDGE BLOCK APPLICATIONS

2 STIRRUP DETAIL
 SCALE: 1" = 1'-0"

**MASONRY WITH
 8" "BuildBlock"**

MASONRY VENEER (VERIFY
 CODE APPROVED GRADE
 CLEARANCE FOR PROJECT
 LOCATION)

"BuildBlock" 8" I.C.F. UNITS
 GROUT FILL BELOW GRADE

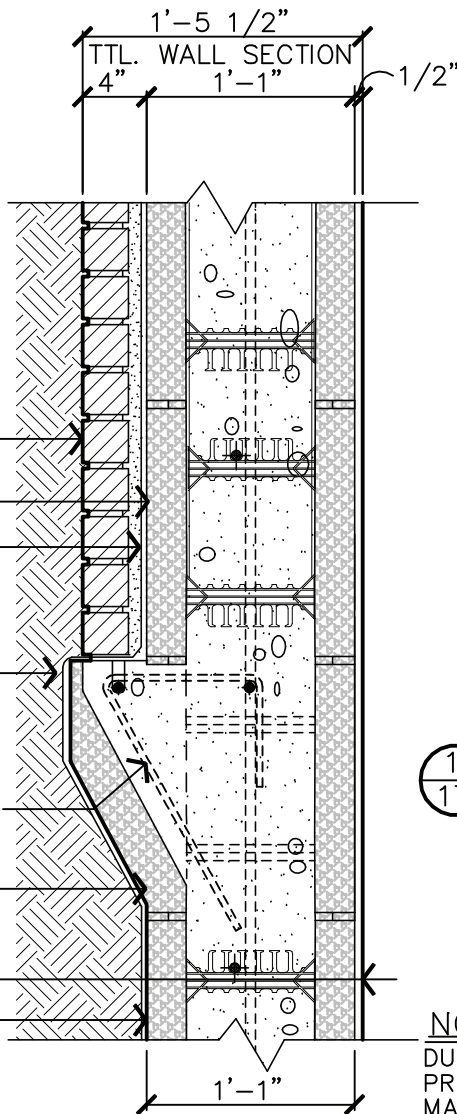
APPROVED MEMBRANE
 WATERPROOFING
 (ALL SURFACES
 BELOW GRADE)

REBAR STIRRUPS (SEE DETAIL OR
 AS ENGINEERED FOR SPECIFIC LOAD)

"BuildBlock" LEDGE BLOCK

1/2" GYP. BD. MIN. OR
 PER LOCAL CODES

"BuildBlock" 8" I.C.F. UNITS



**"BuildBlock"
 LEDGE BLOCK
 SECTION DETAIL**

1 SCALE: 1" = 1'-0"
 (ALSO REFER TO DETAIL
 SHEET 5 FOR "BUILD BLOCK"
 FORM DIMENSIONS)

NOTE:
 DUE TO VARIATIONS IN SELECTED
 PRINTER SETTINGS, NOTED SCALES
 MAY NO LONGER BE APPLICABLE

	BUILDBLOCK 8" LEDGE BLOCK APPLICATION 2		
	DATE/REV 10-03-07 /4	SCALE NTS	DETAIL SHEET
9705 N. BROADWAY EXTENSION, SUITE 200, OKLAHOMA CITY, OK 73114 OFFICE: 405-840-3386 TOLL FREE: 866-222-2575 FAX: 831-597-0792 BUILDBLOCK.COM	CONSTRUCTION SHALL BE IN ACCORDANCE WITH ALL APPLICABLE LOCAL AND NATIONAL CODES. ALL DRAWINGS ARE SUBJECT TO CHANGE WITHOUT NOTICE.		17