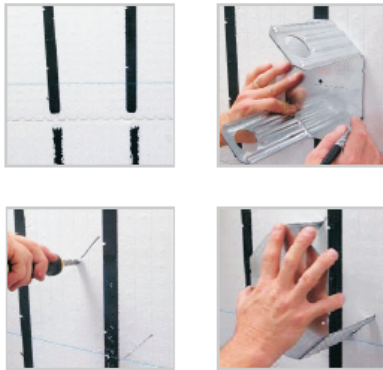
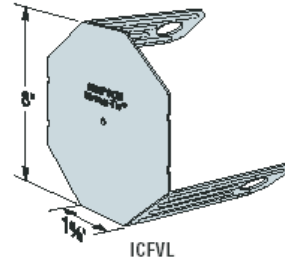


ICF Connectors



The ICF Ledger Connector System is engineered to solve the challenges of mounting wood or steel ledgers to insulated concrete form (ICF) walls. This flier provides information on the various products we have to serve the ICF market.

This year Simpson is introducing a new component of the system—the ICFVL—designed to provide both vertical and lateral, in-plane resistance. The system is still quick, versatile and easy to use but now provides so much more! Simpson's ICFVL is made from galvanized, 14 gauge steel. The embedded legs are embossed for additional stiffness and the holes allow for concrete to flow through and around the connector. The exposed flange on the face of the ICF provides a structural surface for mounting either a wood or steel ledger.

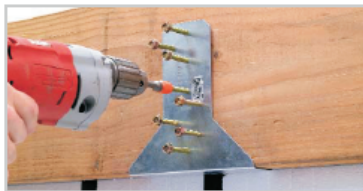


INSTALLATION OF ICFVL:

- Snap a line for the bottom of the ledger and mark the on center spacing
- Use the ICFVL to mark the kerf locations in the ICF
- Cut the kerfs as marked
- Insert the ICFVL flush to the face of the ICF
- Place concrete (min f'c = 2500 psi).



Installation tip: Use a screw through diamond hole in face of ICFVL and into web to hold in place during concrete pour (remove prior to ledger installation).



ATTACHMENT OF WOOD LEDGER

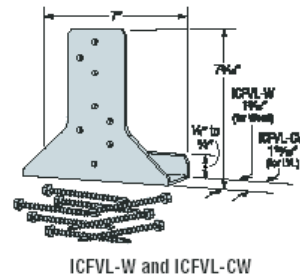
- Slip the appropriate ledger connector underneath the wood ledger (as shown)
- Install the eight ICF-D3 screws partially into the ledger
- Position the ledger level to the chalk line and drive the screws through the wood and into the ICFVL
- All screws should be located at least 1/2" from the edge of the ICFVL

Note: Do not splice at the ICFVL-W or ICFVL-CW's location.



ATTACHMENT OF STEEL LEDGER

- Position the ledger level to the chalk line and drive the required number of screws through the steel ledger and into the ICFVL
- All screws should be located at least 1/2" from the edge of the ICFVL
- Space screws evenly



ICFVL-W and ICFVL-CW

800-999-5099
www.strongtie.com

© Copyright 2005 Simpson Strong-Tie Company, Inc.

Printed in the USA

F-ICFVL06 12/05 exp. 1/08

DETAIL SHEET CONTAINS SPECIFICATIONS AND DETAILS PROVIDED BY SIMPSON STRONG-TIE INC. BUILDBLOCK ASSUMES NO LIABILITY FOR THE USE OF ANY INFORMATION PROVIDED BY THE MANUFACTURER. IT SHALL BE THE USERS RESPONSIBILITY TO VERIFY THE CURRENT STATUS AND APPLICATION CHANGES WITH THE MANUFACTURER. CONTACT: ON-LINE WWW.STONGTIE.COM - ENGINEERING SUPPORT AT 1-800-999-5099



9705 N. BROADWAY EXTENSION, SUITE 200, OKLAHOMA CITY, OK 73114
OFFICE: 405-840-3386 | TOLL FREE: 866-222-2575 | FAX: 831-597-0792
BUILDBLOCK.COM

SIMPSON ICF CONNECTORS

DATE/REV 03-12-07 /2

SCALE NTS

DETAIL SHEET

NOTES

CONSTRUCTION SHALL BE IN ACCORDANCE WITH ALL APPLICABLE LOCAL AND NATIONAL CODES. ALL DRAWINGS ARE SUBJECT TO CHANGE WITHOUT NOTICE.

15