

ICF LEDGER CONNECTOR SYSTEM
AS MFG. BY "SIMPSON STRONG-TIE INC.)

FLOOR SYSTEM PER
CONSTRUCTION DRAWINGS

CONTINUOUS LEDGER BOARD
SUBSTRATE AS REQUIRED

STUCCO, "DRYVIT" OR OTHER
CEMENTIOUS POLYMER COATING
PER CONSTRUCTION SPECIFICATIONS

GRADE LEVEL
(1ST FLOOR OR
ADDITIONAL STORIES)

NUMBER OF COURSES AS REQUIRED
FOR REGIONAL FOUNDATION DEPTHS
AS PRESCRIBED BY LOCAL CODES

APPROVED JOIST HANGER

OVERLAP 40 DIAMETERS

SLOPE FINISHED GRADE
AWAY FROM BUILDING

CRAWL SPACE

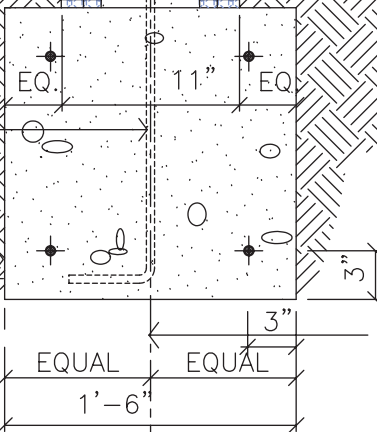
CUT & BOX OUT FORMS
AT REQUIRED CODE
ACCESS & VENTILATION
PANELS
APPROVED 15 MINUTE
FIRE BARRIER WHERE
REQUIRED BY CODE

18" MIN. OR PER
LOCAL CODES

"BuildBlock" 6" OR 8"
UNITS - REINFORCING PER
SPECIFICATIONS

VERTICAL REBAR PER
DESIGN - SEE ENGINEERING
GUIDELINES - SPACE PINS EQ.
W/ VERTICAL STEEL IN WALLS

CONCRETE FOOTING -
REINFORCING PER
CONSTRUCTION
DRAWINGS



NOTES:

- VARIATIONS IN IMPOSED LIVE & DEAD LOADS AND OTHER APPLICATION SPECIFIC VARIABLES REQUIRE ALL ASPECTS OF THE DETAILS SHOWN HERE TO BE DESIGNED AND /OR APPROVED BY A QUALIFIED ENGINEER
- ALL CONSTRUCTION SHALL BE IN ACCORDANCE W/ THE SPECIFICATION OF AND THE RESPONSIBILITY OF A QUALIFIED STRUCTURAL ENGINEER.
- INSTALL APPROVED MEMBRANE WATER-PROOFING AT ALL SURFACES BELOW GRADE EXTEND 12" MIN. ABOVE FINAL GRADE

⊕ FOOTING - DIMENSIONS SHOWN ARE MIN. STANDARD - ADJUST AS REQUIRED FOR SOIL CONDITIONS AND PER LOCAL CODES

NOTE:

DUE TO VARIATIONS IN SELECTED PRINTER SETTINGS, NOTED SCALES MAY NO LONGER BE APPLICABLE

1
23c

DETAIL CROSS SECTION

SCALE: 1" = 1'-0"



STUCCO ON BUILDBLOCK & CRAWL SPACE

DATE/REV	11-17-09	SCALE	NTS	DETAIL SHEET
----------	----------	-------	-----	--------------

NOTES	
-------	--

9705 N. BROADWAY EXTENSION, SUITE 200, OKLAHOMA CITY, OK 73114
OFFICE: 405-840-3386 | TOLL FREE: 866-222-2575 | FAX: 831-597-0792
BUILDBLOCK.COM

CONSTRUCTION SHALL BE IN ACCORDANCE WITH ALL APPLICABLE LOCAL AND NATIONAL CODES. ALL DRAWINGS ARE SUBJECT TO CHANGE WITHOUT NOTICE.

23C