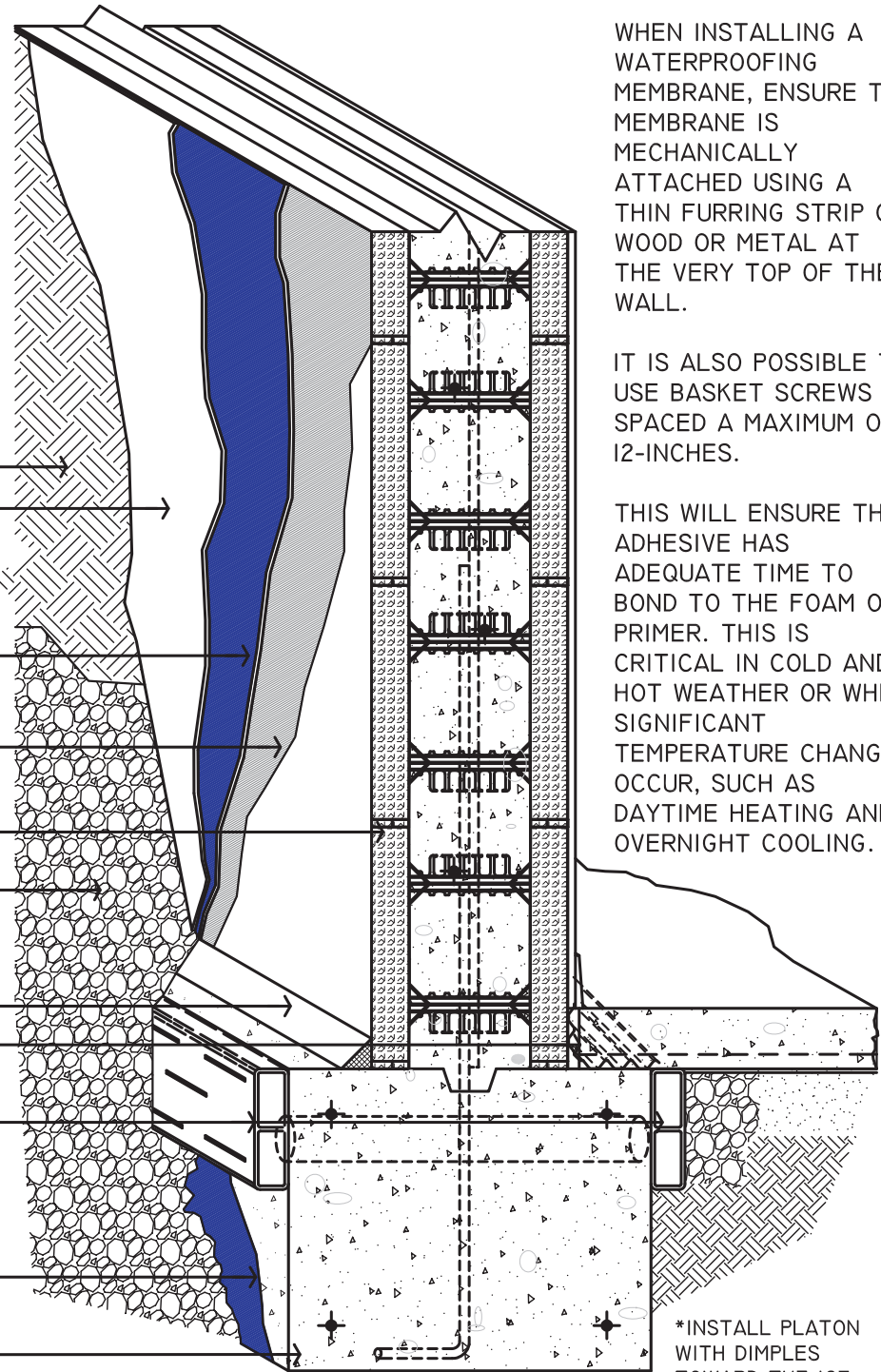


ADDITIONAL INFORMATION AND PRODUCT SPECIFICATIONS AT BUILDBLOCK.COM

THE WATERPROOFING SYSTEM CONSISTS OF A PEEL AND STICK SHEET ADHERED DIRECTLY TO THE ICF AND A PLATON DIMPLE MEMBRANE TO PROTECT WATERPROOFING FROM BACKFILL, PROVIDE A DRAINAGE PLANE AND AN AIR GAP TO RELIEVE HYDROSTATIC PRESSURE IN THE SOIL.

- COMPACTED BACKFILL
- PLATON AIR GAP (DIMPLE) WATERPROOFING MEMBRANE BY NORTH AMERICAN SPECIALTY PRODUCTS*
- TAMKO TW-60 PEEL AND STICK SHEET WATERPROOFING
- TAMKO TWP-1 QUICK DRY PRIMER/ TWP-2 WATER BASED PRIMER**
- BUILDBLOCK 8" ICF UNITS
- PERMEABLE BACKFILL 3/4" CRUSHED STONE OR AS SPECIFIED
- FIBER CANT OVER MASTIC
- "CACTUS BOARD" FLOOR EDGE BY BASEMENT SYSTEMS
- "FORM-A-DRAIN" FOUNDATION DRAINAGE SYSTEM. BY NORTH AMERICAN SPECIALTY PRODUCTS
- LIQUID APPLIED OR TROWEL GRADE WATERPROOFING
- INTEGRAL CRYSTALLINE WATERPROOFING BY PENETRON OR XYPEX



WHEN INSTALLING A WATERPROOFING MEMBRANE, ENSURE THE MEMBRANE IS MECHANICALLY ATTACHED USING A THIN FURRING STRIP OF WOOD OR METAL AT THE VERY TOP OF THE WALL.

IT IS ALSO POSSIBLE TO USE BASKET SCREWS SPACED A MAXIMUM OF 12-INCHES.

THIS WILL ENSURE THE ADHESIVE HAS ADEQUATE TIME TO BOND TO THE FOAM OR PRIMER. THIS IS CRITICAL IN COLD AND HOT WEATHER OR WHEN SIGNIFICANT TEMPERATURE CHANGES OCCUR, SUCH AS DAYTIME HEATING AND OVERNIGHT COOLING.


*INSTALL PLATON WITH DIMPLES TOWARD THE ICF WALL.

**WATERPROOFING SHOULD BE APPLIED WITHIN A FEW HOURS OF PRIMING THE ICF'S.

1 ISOMETRIC CUT-AWAY
33 SCALE: NTS

GENERAL DETAIL NOTES:

1. ALTERNATE WATERPROOFING PRODUCTS WITH EQUAL OR GREATER SPECIFICATIONS MAY BE USED.
2. FOLLOW ALL MANUFACTURER'S INSTALLATION DETAILS AND SPECIFICATIONS.

	SUB-GRADE WATERPROOFING			DETAIL SHEET
	DATE/REV	9-26-15 / 2	SCALE	NTS
NOTES		<div style="font-size: 2em; font-weight: bold; margin: 0;">33</div>		
9705 N. BROADWAY EXTENSION, SUITE 200, OKLAHOMA CITY, OK 73114 OFFICE: 405-840-3386 TOLL FREE: 866-222-2575 FAX: 831-597-0792 BUILDBLOCK.COM		CONSTRUCTION SHALL BE IN ACCORDANCE WITH ALL APPLICABLE LOCAL AND NATIONAL CODES. ALL DRAWINGS ARE SUBJECT TO CHANGE WITHOUT NOTICE.		