

**2** STIRRUP DETAIL  
52 SCALE: 1" = 1'-0"

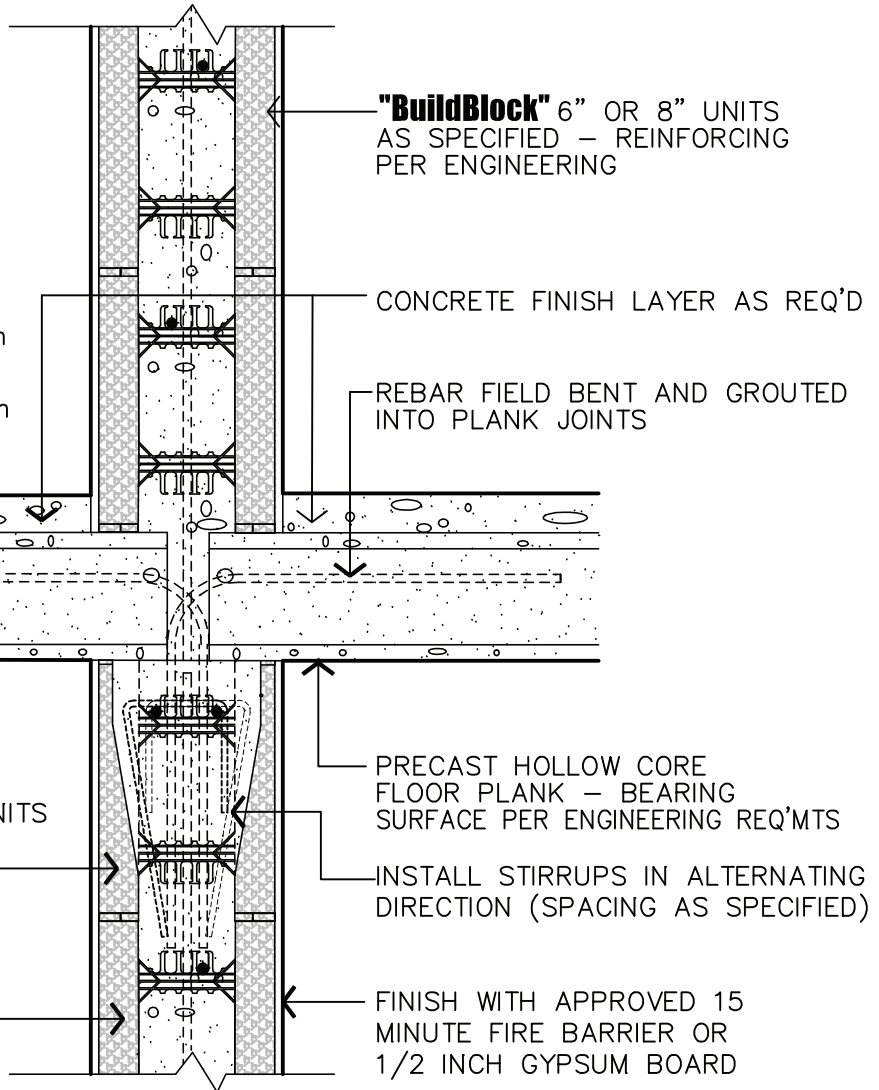
MINIMUM SPACING:

1. VENEER – 1000 lb/ft (15kN/m @ 18" (450mm)
2. VENEER – 1500 lb/ft (22kN/m @ 12" (300mm)

SECOND POUR  
FIRST POUR

**"BuildBlock" 6" OR 8" TAPER UNITS**  
AS SPECIFIED – REINFORCING  
PER ENGINEERING

**"BuildBlock" 6" OR 8" UNITS**  
AS SPECIFIED – REINFORCING  
PER ENGINEERING



NOTES:

1. VARIATIONS IN IMPOSED LIVE & DEAD LOADS AND OTHER APPLICATION SPECIFIC VARIABLES REQUIRE ALL ASPECTS OF THE DETAILS SHOWN HERE TO BE DESIGNED AND /OR APPROVED BY A QUALIFIED ENGINEER
2. ALL CONSTRUCTION SHALL BE IN ACCORDANCE W/ THE SPECIFICATION OF AND THE RESPONSIBILITY OF A QUALIFIED STRUCTURAL ENGINEER.

**1** SECTION DETAIL  
52 SCALE: 1" = 1'-0"

NOTE:

DUE TO VARIATIONS IN SELECTED PRINTER SETTINGS, NOTED SCALES MAY NO LONGER BE APPLICABLE



9705 N. BROADWAY EXTENSION, SUITE 200, OKLAHOMA CITY, OK 73114  
OFFICE: 405-840-3386 | TOLL FREE: 866-222-2575 | FAX: 831-597-0792  
BUILDBLOCK.COM

TAPER UNIT & CORE SLAB

DATE/REV	09-30-07 /2	SCALE	NTS	DETAIL SHEET
NOTES				<b>52</b>
CONSTRUCTION SHALL BE IN ACCORDANCE WITH ALL APPLICABLE LOCAL AND NATIONAL CODES. ALL DRAWINGS ARE SUBJECT TO CHANGE WITHOUT NOTICE.				