

NOTE:

INSTALL APPROVED MEMBRANE WATER-PROOFING AT ALL SURFACES BELOW GRADE
EXTEND 12" MIN. ABOVE FINAL GRADE

FLOOR SYSTEM PER
 CONSTRUCTION DRAWINGS _____

CONTINUOUS LEDGER BOARD _____
 WEEP HOLES PER SECTION 703.7.6
 OF THE IRC 2003 CODE _____

1ST FIN. FLR. ELEV. 100'-0" (DATUM)

6" MIN. _____
 SLOPE FINISHED GRADE
 AWAY FROM BUILDING _____

GROUT FILL BELOW GRADE _____

APPROVED JOIST HANGER _____
 MASONRY VENEER (VERIFY CODE APPROVED
 GRADE CLEARANCE FOR PROJECT LOCATION) _____

APPROVED MEMBRANE WATER PROOFING _____
 CAST EMBEDDED STEEL ANCHOR
 BOLTS - SIZE & FREQUENCY PER
 ENGINEERING SPECIFICATIONS _____

**EXTERIOR
 APPLICATIONS**

FLOOR SYSTEM FOR EXTERIOR
 APPLICATION SUCH AS WOOD OR
 METAL DECKS MAY USE A SIMILAR
 ANCHORING SYSTEM TO THOSE SHOWN
 ON THIS DETAIL SHEET

FLOOR SYSTEM PER
 CONSTRUCTION DRAWINGS _____

CONTINUOUS LEDGER BOARD _____
 1ST FIN. FLR. ELEV. 100'-0" (DATUM)

6" MIN. _____
 SLOPE FINISHED GRADE
 AWAY FROM BUILDING _____

WEEP HOLES PER SECTION 703.7.6
 OF THE IRC 2003 CODE _____

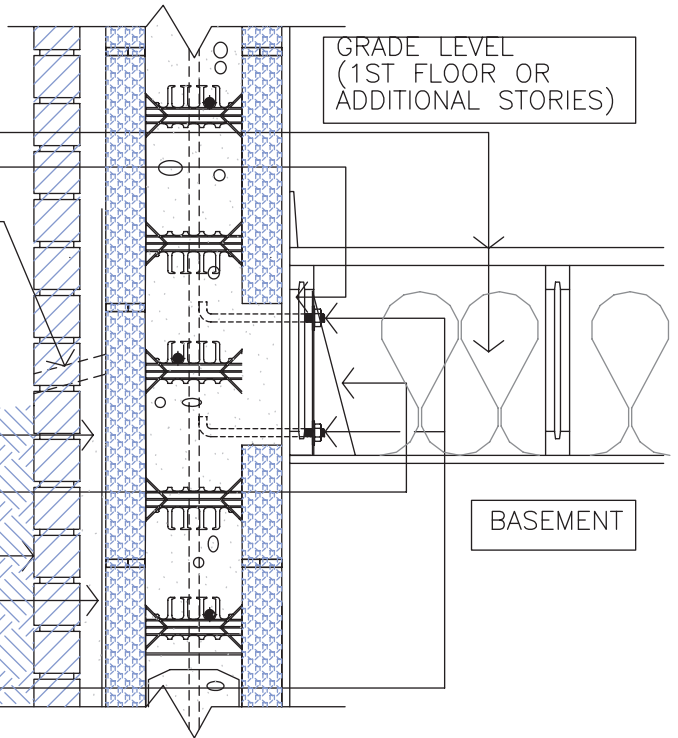
GROUT FILL BELOW GRADE _____

APPROVED MEMBRANE WATER-
 PROOFING AT ALL SURFACES
 BELOW GRADE _____
 APPROVED JOIST HANGER _____

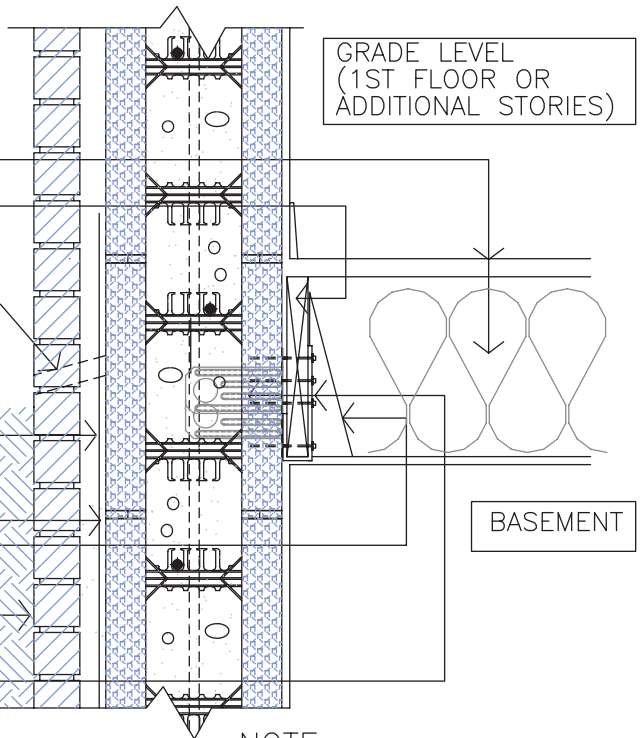
MASONRY VENEER (VERIFY CODE APPROVED
 GRADE CLEARANCE FOR PROJECT LOCATION) _____

ICF LEDGER CONNECTOR SYSTEM
 AS MFG. BY "SIMPSON STRONG-TIE INC.) _____

SEE ADDITIONAL INFORMATION
 ABOUT "SIMPSON" PRODUCTS
 ONLINE - WWW.STRONGTIE.COM
 OR CONTACT ENGINEERING
 SUPPORT @ 1-800-999-5099



2 ALTERNATE SECTION DETAIL
14 SCALE: 1" = 1'-0"



1 SECTION DETAIL
14 SCALE: 1" = 1'-0"

NOTE:
 DUE TO VARIATIONS IN SELECTED
 PRINTER SETTINGS, NOTED SCALES
 MAY NO LONGER BE APPLICABLE



9705 N. BROADWAY EXTENSION, SUITE 200, OKLAHOMA CITY, OK 73114
 OFFICE: 405-840-3386 | TOLL FREE: 866-222-2575 | FAX: 831-597-0792
 BUILDBLOCK.COM

BUILDBLOCK 6" TYPICAL FLOOR INTERSECTIONS

DATE/REV	11-17-09	SCALE	NTS	DETAIL SHEET
NOTES				14
CONSTRUCTION SHALL BE IN ACCORDANCE WITH ALL APPLICABLE LOCAL AND NATIONAL CODES. ALL DRAWINGS ARE SUBJECT TO CHANGE WITHOUT NOTICE.				