

NOTE:

INSTALL APPROVED MEMBRANE WATER-PROOFING AT ALL SURFACES BELOW GRADE
EXTEND 12" MIN. ABOVE FINAL GRADE

FLOOR SYSTEM PER CONSTRUCTION DRAWINGS

CONTINUOUS LEDGER BOARD

WEEP HOLES PER SECTION 703.7.6 OF THE IRC 2003 CODE

1ST FIN. FLR. ELEV. 100'-0" (DATUM)

6" MIN.
SLOPE FINISHED GRADE AWAY FROM BUILDING
GROUT FILL BELOW GRADE

APPROVED JOIST HANGER

MASONRY VENEER (VERIFY CODE APPROVED GRADE CLEARANCE FOR PROJECT LOCATION)

APPROVED MEMBRANE WATER PROOFING

CAST EMBEDDED STEEL ANCHOR BOLTS - SIZE & FREQUENCY PER ENGINEERING SPECIFICATIONS

EXTERIOR APPLICATIONS

FLOOR SYSTEM FOR EXTERIOR APPLICATION SUCH AS WOOD OR METAL DECKS MAY USE A SIMILAR ANCHORING SYSTEM TO THOSE SHOWN ON THIS DETAIL SHEET

FLOOR SYSTEM PER CONSTRUCTION DRAWINGS

CONTINUOUS LEDGER BOARD

1ST FIN. FLR. ELEV. 100'-0" (DATUM)

WEEP HOLES PER SECTION 703.7.6 OF THE IRC 2003 CODE

6" MIN.
SLOPE FINISHED GRADE AWAY FROM BUILDING

GROUT FILL BELOW GRADE

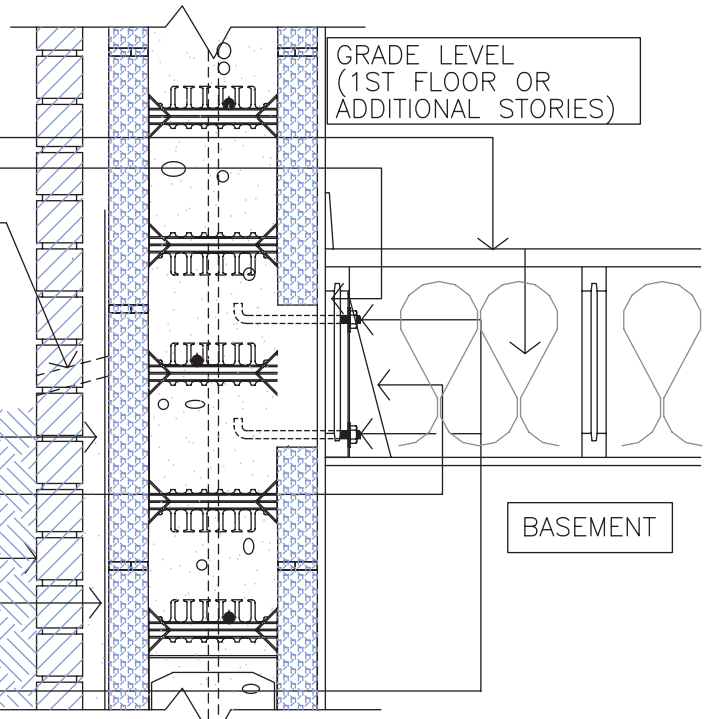
APPROVED MEMBRANE WATER-PROOFING AT ALL SURFACES BELOW GRADE

APPROVED JOIST HANGER

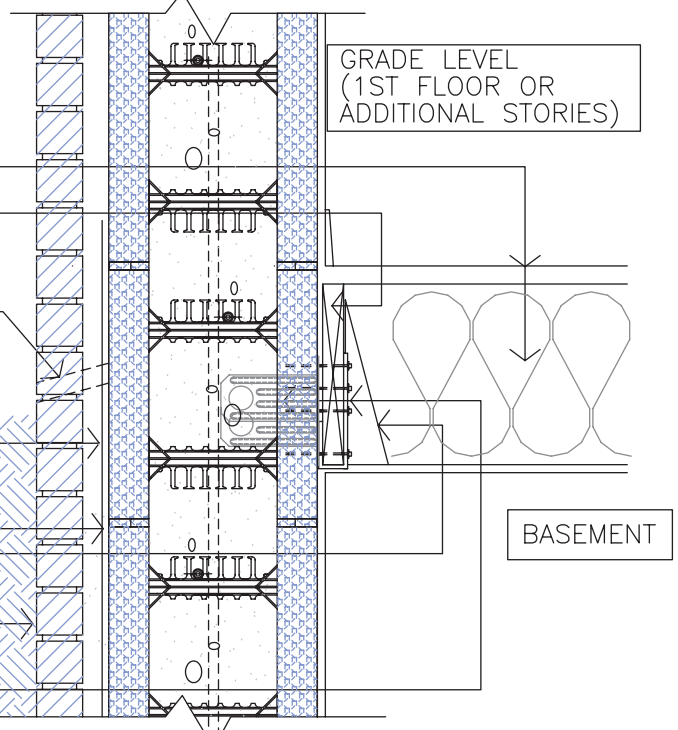
MASONRY VENEER (VERIFY CODE APPROVED GRADE CLEARANCE FOR PROJECT LOCATION)

ICF LEDGER CONNECTOR SYSTEM AS MFG. BY "SIMPSON STRONG-TIE INC.)

SEE ADDITIONAL INFORMATION ABOUT "SIMPSON" PRODUCTS ONLINE - WWW.STRONGTIE.COM OR CONTACT ENGINEERING SUPPORT @ 1-800-999-5099



2 ALTERNATE SECTION DETAIL
SCALE: 1" = 1'-0"



1 SECTION DETAIL
SCALE: 1" = 1'-0"

NOTE:
DUE TO VARIATIONS IN SELECTED PRINTER SETTINGS, NOTED SCALES MAY NO LONGER BE APPLICABLE



BUILDBLOCK 8" TYPICAL FLOOR WALL INTERSECTIONS

DATE/REV	11-17-09	SCALE	NTS	DETAIL SHEET
----------	----------	-------	-----	--------------

NOTES

9705 N. BROADWAY EXTENSION, SUITE 200, OKLAHOMA CITY, OK 73114
OFFICE: 405-840-3386 | TOLL FREE: 866-222-2575 | FAX: 831-597-0792
BUILDBLOCK.COM

CONSTRUCTION SHALL BE IN ACCORDANCE WITH ALL APPLICABLE LOCAL AND NATIONAL CODES. ALL DRAWINGS ARE SUBJECT TO CHANGE WITHOUT NOTICE.

14B