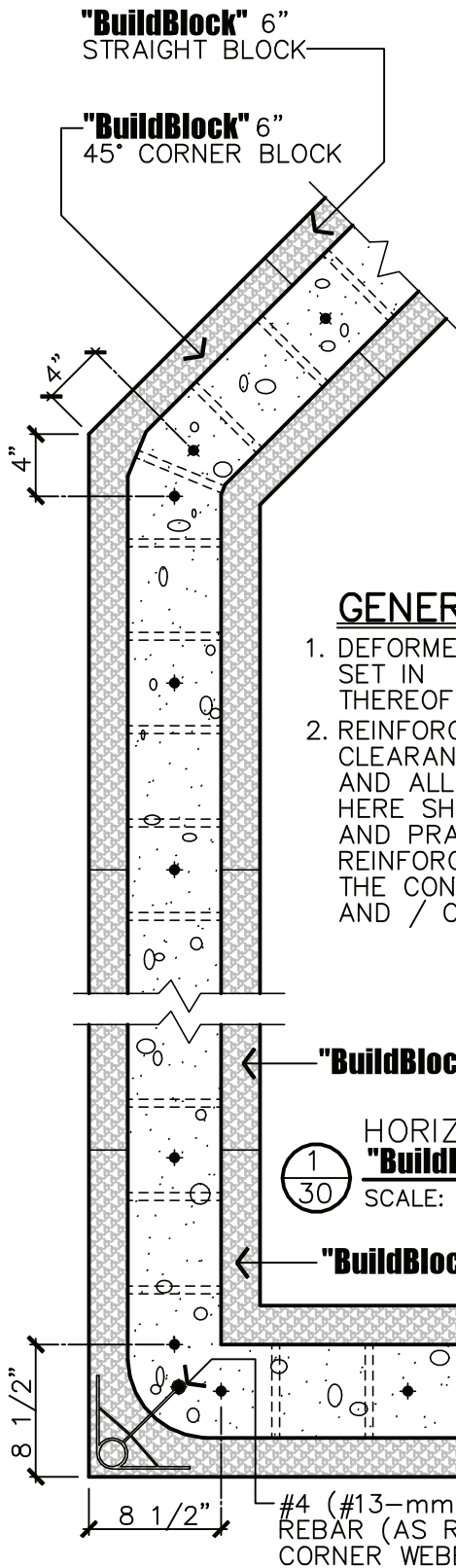
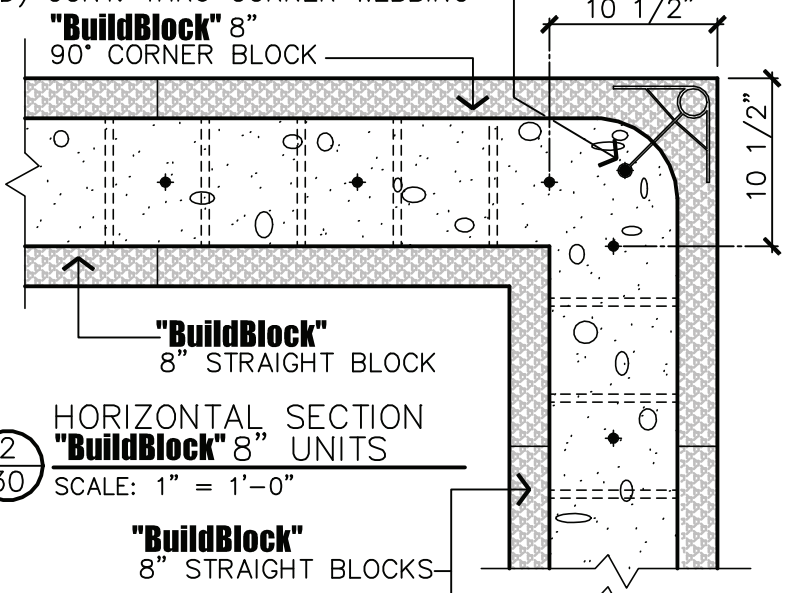


#4 (#13-mm) OR #5 (#16-mm) REBAR (AS REQUIRED) CONT. THRU CORNER WEBBING



1  
30  
HORIZONTAL SECTION  
"BuildBlock" 6" UNITS  
SCALE: 1" = 1'-0"  
"BuildBlock" 6" 90° CORNER BLOCKS



2  
30  
HORIZONTAL SECTION  
"BuildBlock" 8" UNITS  
SCALE: 1" = 1'-0"  
"BuildBlock" 8" STRAIGHT BLOCKS

**GENERAL DETAIL NOTES:**

1. DEFORMED REINFORCING BARS SHALL BE SET IN INCREMENTS OF 6" OR MULTIPLES THEREOF - BAR SIZES AS SPECIFIED
2. REINFORCING GRADES, LAP SPACING, CLEARANCES, MIN. CONCRETE COVER AND ALL ASPECTS OF THE WORK DETAILED HERE SHALL FOLLOW NATIONAL STANDARDS AND PRACTICES FOR CONCRETE STEEL REINFORCING AS PRESCRIBED BY ASTM, THE CONCRETE STEEL REINFORCING INSTITUTE, AND / OR OTHER LOCAL CODE USE GUIDELINES.

**NOTE:**  
DUE TO VARIATIONS IN SELECTED PRINTER SETTINGS, NOTED SCALES MAY NO LONGER BE APPLICABLE



9705 N. BROADWAY EXTENSION, SUITE 200, OKLAHOMA CITY, OK 73114  
OFFICE: 405-840-3386 | TOLL FREE: 866-222-2575 | FAX: 831-597-0792  
BUILDBLOCK.COM

**VERTICAL REINFORCING**

|          |              |       |     |              |
|----------|--------------|-------|-----|--------------|
| DATE/REV | 11-28-06 / 2 | SCALE | NTS | DETAIL SHEET |
| NOTES    |              |       |     |              |

CONSTRUCTION SHALL BE IN ACCORDANCE WITH ALL APPLICABLE LOCAL AND NATIONAL CODES. ALL DRAWINGS ARE SUBJECT TO CHANGE WITHOUT NOTICE.

**30**