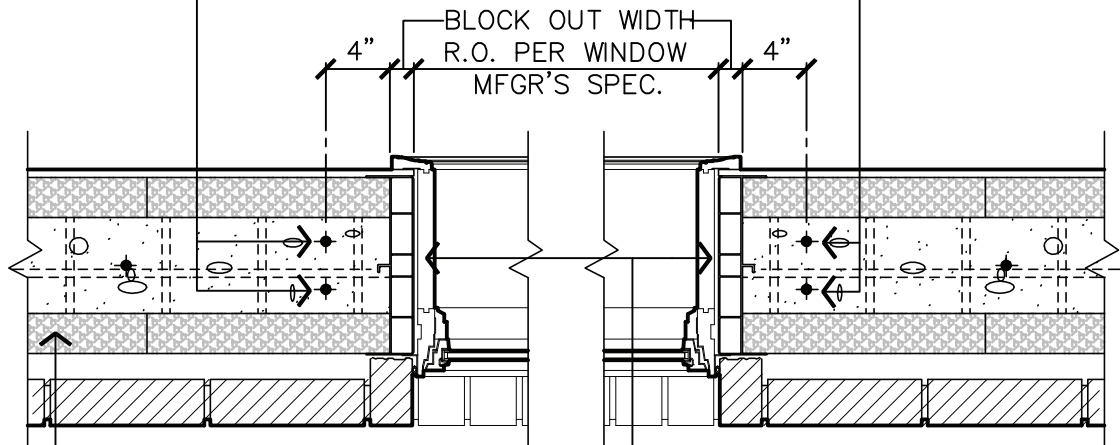


UNLESS OTHERWISE SPECIFIED (2) #5 (#16-mm) REBAR SHALL BE PLACED AT ALL OPENINGS - JAMBS, SILL & HEAD (PERIMETER) - REFER TO DIAGRAM FOR ADDITIONAL CORNER REINFORCING REQUIREMENTS - ALL HORZ. SHALL EXTEND 12" MIN. PAST OPENING



JAMB (TYP. WINDOW)

"BuildBlock" 6" OR 8" I.C.F. UNITS
"V-BUCK BLOCK OUT SYSTEM" AS MFGD' BY VINYL TECHNOLOGIES INC.
- FOR ADDITIONAL INFORMATION REFER TO SEE OUR WEBSITE UNDER PRODUCTS - V-BUCK

2
31 HORIZONTAL SECTION
SCALE: 1" = 1'-0"

NOTE:

ALTHOUGH NOT RECOMMENDED WOOD BLOCK OUT MAY BE USED - ALL LUMBER SHALL BE TREATED - ATTACH W/ 6" CONCRETE SCREWS OR RING NECK GALVANIZED NAILS CAST EMBEDDED IN CORE @ (2) X 12" O.C. MINIMUM

REFER TO LINTEL SCHEDULE IN INSTALLATION MANUAL FOR HEADER REINF'G REQUIREMENTS

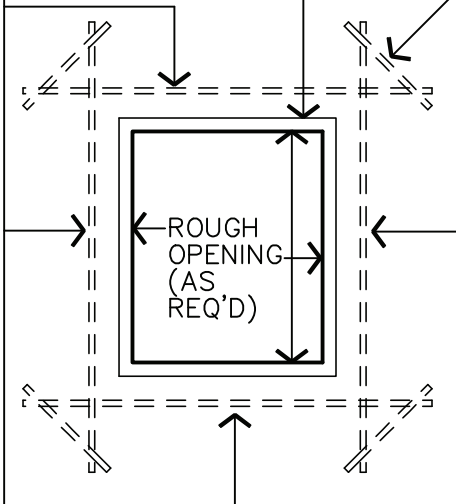
HEAD (TYP. WINDOW)

DOOR HEAD. & OTHER FENESTRATION SIMILAR

"V-BUCK BLOCK OUT SYSTEM" AS MFGD' BY VINYL TECHNOLOGIES INC.
- FOR ADDITIONAL INFORMATION SEE OUR WEBSITE UNDER PRODUCTS - V-BUCK

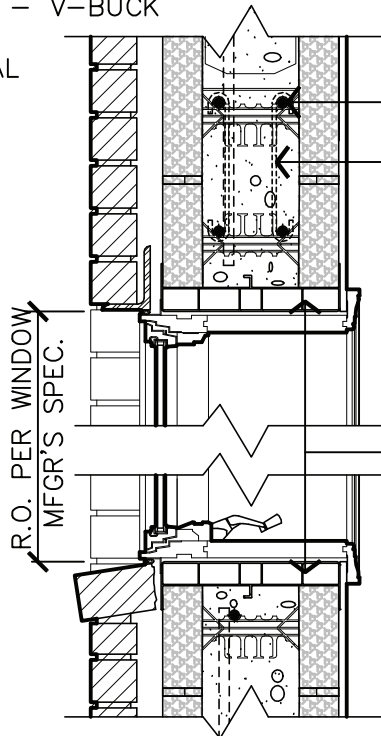
1
31 VERTICAL SECTION
SCALE: 1" = 1'-0"

FURNISH (2) #3 (#10-MM) REBAR @ 45° TIED TO VERTICAL & HORIZONTAL BARS @ EA. CORNER - 12" MIN. PERIMETER "V-BUCK" - BRACE AS REQ'D



OPENING REINFORCING ELEVATION DIAGRAM

NO SCALE



SILL (TYP. WINDOW)

ACCESS, VENT & OTHER FENESTRATION SIMILAR

NOTE:

DUE TO VARIATIONS IN SELECTED PRINTER SETTINGS, NOTED SCALES MAY NO LONGER BE APPLICABLE



9705 N. BROADWAY EXTENSION, SUITE 200, OKLAHOMA CITY, OK 73114
OFFICE: 405-840-3386 | TOLL FREE: 866-222-2575 | FAX: 831-597-0792
BUILDBLOCK.COM

WINDOW OPENINGS

| DATE/REV | 11-28-06 / 2 | SCALE | NTS | DETAIL SHEET |
|----------|--|-------|-----|--------------|
| NOTES | CONSTRUCTION SHALL BE IN ACCORDANCE WITH ALL APPLICABLE LOCAL AND NATIONAL CODES. ALL DRAWINGS ARE SUBJECT TO CHANGE WITHOUT NOTICE. | | | 31 |