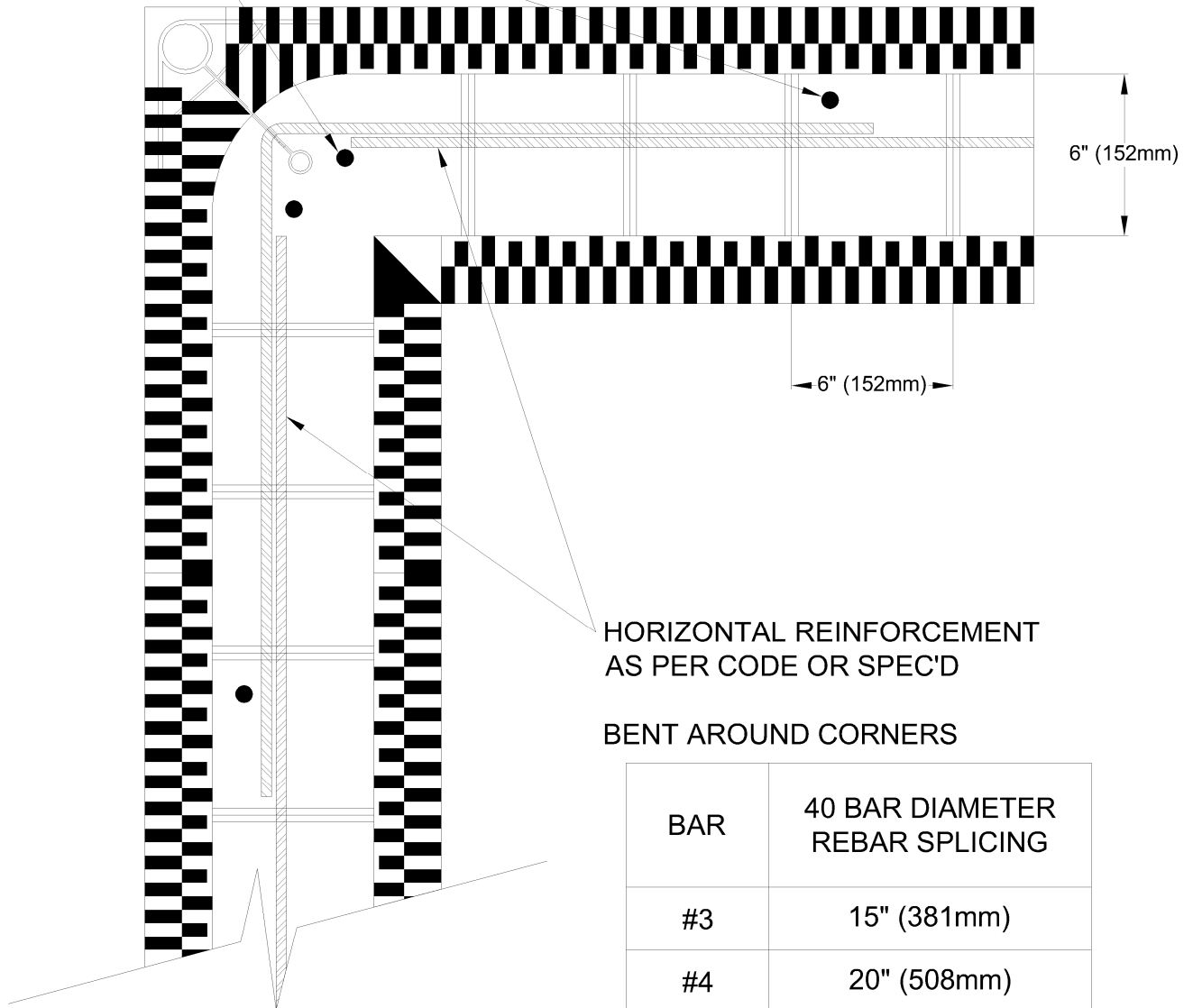


VERTICAL REINFORCEMENT
AS PER CODE OR SPEC'D

ALL VERTICAL AND HORIZONTAL STEEL
SHALL BE PLACED IN CENTER
OF CORE. BARS ARE SHOWN
SEPARATE IN DIAGRAM FOR CLARITY.



HORIZONTAL REINFORCEMENT
AS PER CODE OR SPEC'D

BENT AROUND CORNERS

BAR	40 BAR DIAMETER REBAR SPLICING
#3	15" (381mm)
#4	20" (508mm)
#5	25" (635mm)
#6	30" (762mm)
#7	35" (889mm)
#8	40" (1016mm)