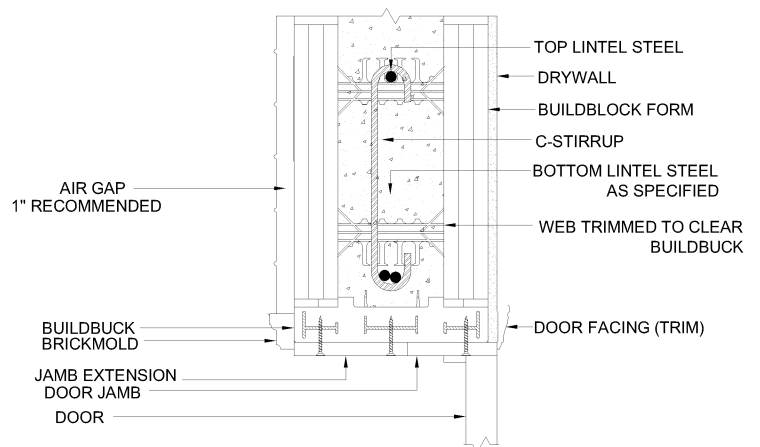


SECTION: BB TOP DOWN VIEW

SECTION: AA DOOR LINTEL



LINTELS (HEADERS ABOVE DOORS AND WINDOWS) SHOULD BE DESIGNED IN ACCORDANCE WITH SITE SPECIFIC ENGINEERING, BUILDBLOCK ENGINEERING MANUAL, PCA-100, THE PRESCRIPTIVE METHOD, OR OTHER APPLICABLE CODES OR ENGINEERING.

HORIZONTAL LINTEL STEEL SHOULD EXTEND 2FT PAST EACH SIDE OF AN OPENING FOR BOTH TOP AND BOTTOM BARS. TOP LINTEL BAR IS TYPICALLY THE TOP HORIZONTAL BAR IN THE WALL, AND RUNS FULL LENGTH OF THE WALL IN THE TOP COURSE.

"C" OR "S" STIRRUPS ARE USED TO SUPPORT BOTTOM BARS, AND SHOULD EXTEND FROM TOP REBAR TO WITHIN 1" TO 2" OF THE BOTTOM OF THE LINTEL. CENTER DISTANCE OF STIRRUPS IS SPECIFIED IN THE LINTEL TABLES IN THE ENGINEERING SOURCE. MAINTAIN CONCRETE COVERAGE OVER STIRRUPS.

DATE / REVISION / BY	7-1-23 / 1 / AQ
SCALE	NTS
FILE NAME	1.602 - BK