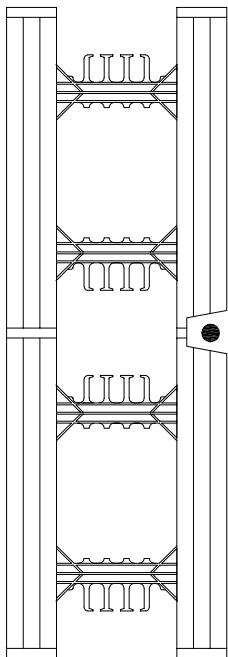
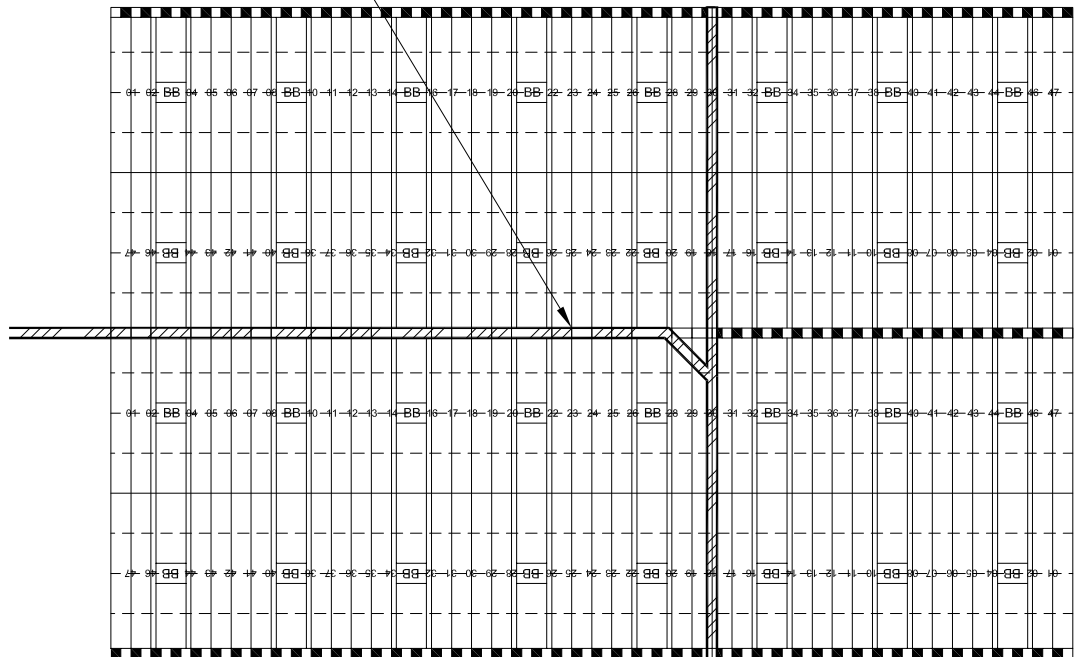


WATER AND PLUMBING LINES UP TO 2-1/2" O.D. MAY BE INSTALLED IN THE POLYSTYRENE. LARGER PLUMBING LINES SHOULD BE INSTALLED PRIOR TO POURING CONCRETE.

MARK PIPE ROUTE TO AVOID EMBEDDED FURRING STRIPS AND USE A HOT KNIFE OR ROUTER TO CUT NARROW CHANNEL 2-1/2" DEEP FOR PIPING



SECTION



SIDE VIEW



DATE / REVISION / BY	7-2-23 / 1 / AQ
SCALE	NTS
FILE NAME	2.017 - BB600