

SECURE WIRE IN PLACE AT 54" O.C. MAXIMUM INTERVALS AND WITHIN 6" FROM BOX WITH A CONSTRUCTION ADHESIVE (COMPATIBLE WITH EXPANDED POLYSTYRENE) (NEC ARTICLE 334.30)

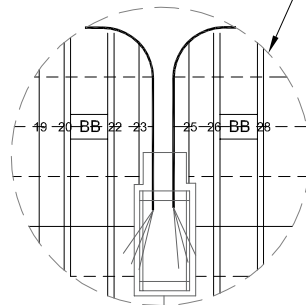
OPTION: CUT PERIODIC "JOGS" IN THE CHANNEL IN LIEU OF ADHESIVE.

MARK WIRE ROUTE TO AVOID EMBEDDED FURRING STRIPS AND USE A HOT KNIFE TO NARROW CHANNEL 1 1/2" TO 2" DEEP FOR TYPE-NM ROMEX WIRE. PROVIDE MIN. CLEARANCE OF 1-1/4" BETWEEN WIRE AND EXTERIOR SURFACE OF EPS FORM FOR THE FULL LENGTH OF THE CHANNEL. NEC ARTICLE 300.4(D) AND NEC ARTICLE 300.4(E)

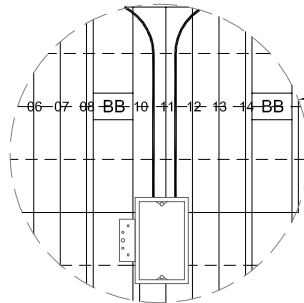
WEBS EVERY 6" O.C.

TYPE-NM ROMEX WIRE PER NEC ARTICLE 334

NOTE: THICKNESS OF EPS FOAM IS 2-1/2", USE 2-1/2" DEEP BOX OR SHALLOWER.



STANDARD DEPTH BOX, CUT AND REMOVE EPS, POSITION BOX, SECURE IN PLACE WITH A CONSTRUCTION ADHESIVE COMPATIBLE WITH EXPANDED POLYSTYRENE).



OFF-SET ELECTRICAL BOX, CUT & REMOVE EPS TO ACCEPT BOX SECURE TO FURRING STRIP

OPTIONAL BOX INSTALLATION

1 INSTALLATION OF WIRING
6 INCH

DATE / REVISION / BY	7-2-23 / 1 / AQ
SCALE	NTS
FILE NAME	2.018 - BB600