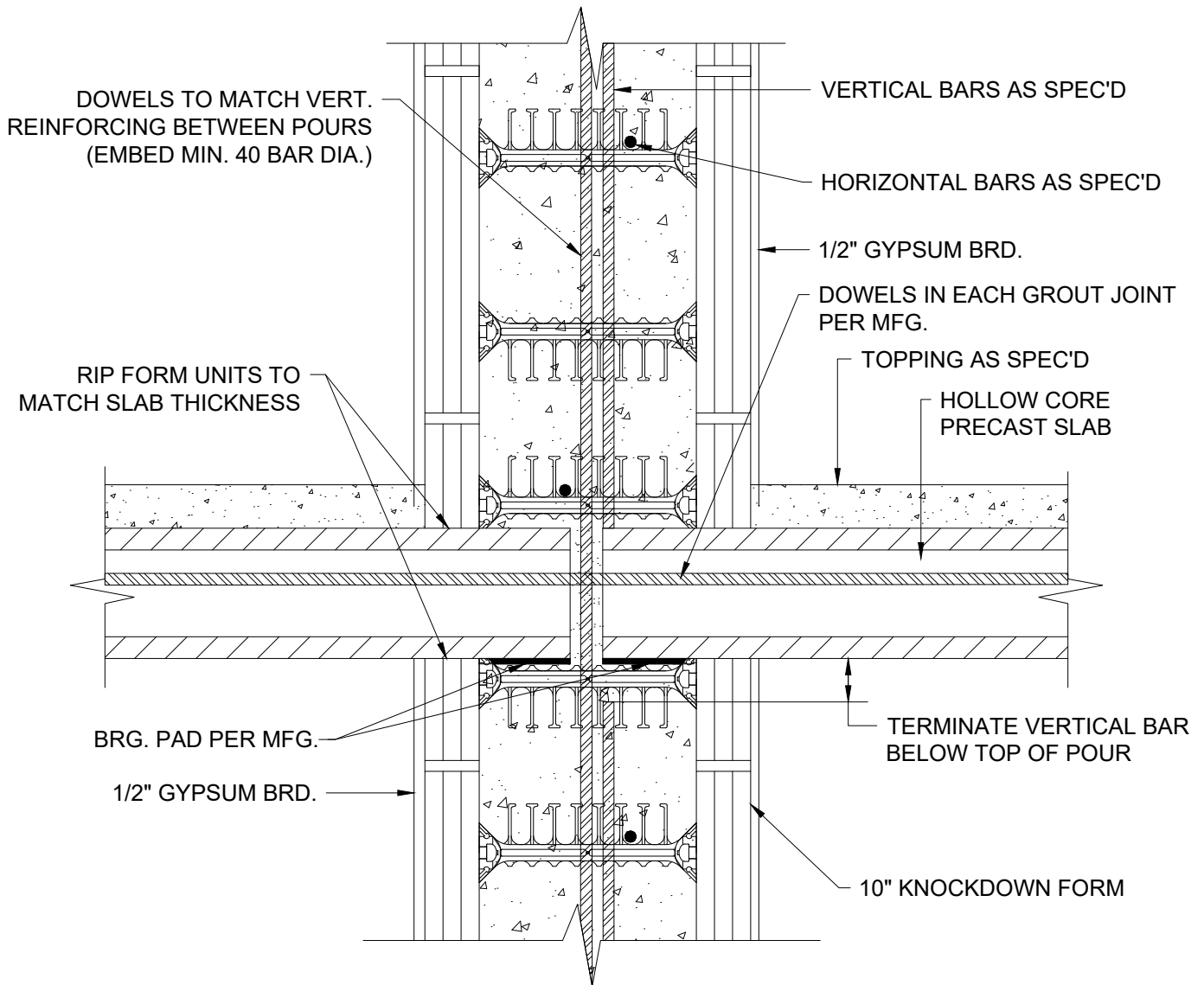


ALL VERTICAL STEEL SHALL BE PLACED IN CENTER OF CORE. BARS ARE SHOWN SEPARATE IN DIAGRAM FOR CLARITY.



1 HOLLOW CORE PRECAST FLOOR SLAB
10 INCH

DATE / REVISION / BY	7-3-23 / 1 / AQ
SCALE	NTS
FILE NAME	4.022 - BL1000