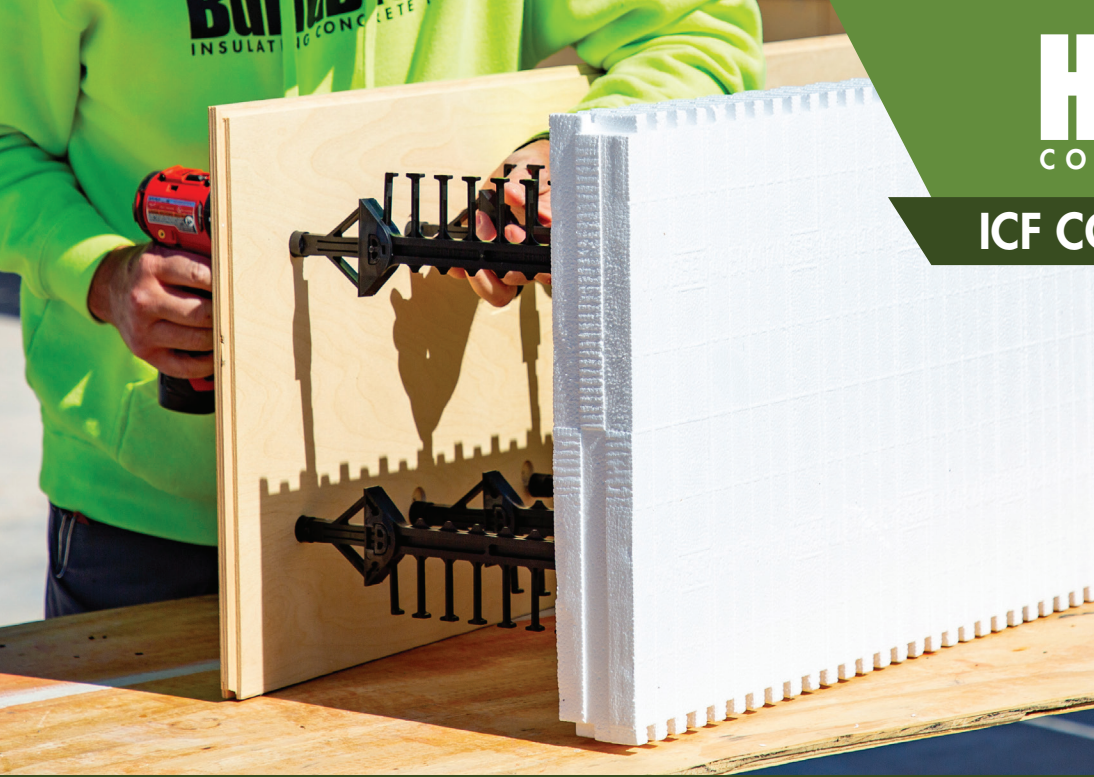


# HardWall

CONCRETE FACE SYSTEM

## ICF CONCRETE FACED WALLS



### INSULATED ONE SIDE. CONCRETE THE OTHER.

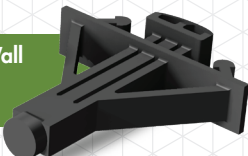
The HardWall system is ideal for projects that require an exposed concrete finish, including elevator shafts, stairwells, parking garages, warehouses, and other commercial spaces. One side provides a clean bare concrete wall, while integrated attachment points offer flexibility for adding finishes, fixtures, or other components as needed.

Built for efficiency, the new HardWall form boards feature predrilled fastening points and tongue-and-groove edges on all sides for fast, accurate stacking. This streamlined design helps simplify installation while eliminating the need for strapping.

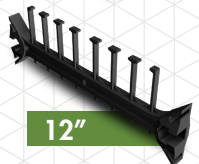
### ALL NEW HARDWALL FORM BOARDS



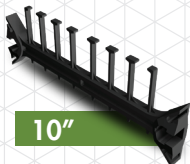
BuildBlock HardWall Connector with removable caps.



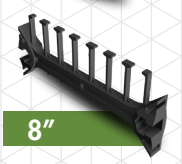
Bridge Clip Connector



12"



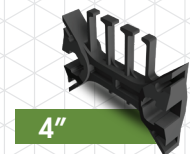
10"



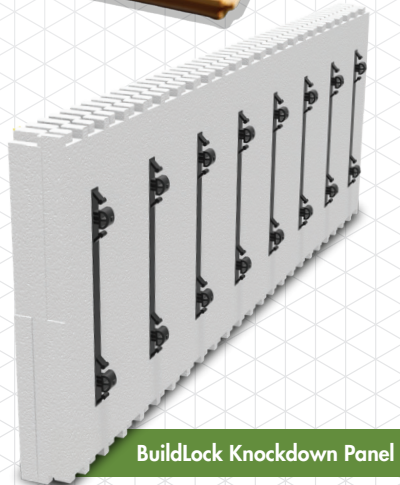
8"



6"



4"



BuildLock Knockdown Panel

BuildLock Knockdown Panel, bridges, and bridge clip connector. The BuildBlock HardWall connector is compatible with any combination and width of form with suitable bracing.

### HARDWALL ADVANTAGES

- Create an insulated ICF wall with bare concrete on one side.
- BuildBlock HardWall Connector extends webs 2½ inches to match width of standard EPS foam panels.
- HardWall Connector provides attachment points for wood, cement board, suitable forming material or wall finishes.
- Removable cap includes guide holes for easy screw attachment and can remain in place as a fastening point for wall finishes.
- Cap can also be removed, leaving a ½" cavity that may be patched for a smooth finished concrete wall.
- BuildBlock HardWall uses a single connector with BuildLock Knockdown bridges to create any wall thickness.



BuildBlock HardWall showing screws and attachment points and patched concrete wall with cap removed.