

HURRICANE ANCHOR FOR ICF SINGLE SILL PLATE CONNECTION TO TRUSS/RAFTER



Burmon Hurricane Anchor (U.S. Patent No. 10280617B2) is specifically designed to tie down roof trusses to wall frames for US Building Systems and is FBC Code Compliant updated with latest changes to the 2018 International Building Code.

The revolutionary Burmon design enables the anchor to be securely fixed directly to the top plate. Using a cordless impact driver, simply attach the bracket to the top plate using Burmon panhead screws. The truss is then placed inside the bracket and fixed using Burmon roofing screws. This finishes the tie down of the trusses eliminating the hassle of going back later to nail off connectors. The Hurricane Anchor is faster and easier to install than ordinary conventional connectors whilst delivering a stronger tie down over the whole roof.



FEATURES:

- ✓ Designed and engineered to resist 96% of all global high wind events
- ✓ High Wind Resistant
- ✓ Code Compliant
- ✓ Cost Competitive
- ✓ Fast and easy to install - Impact Driver Technology
- ✓ No toe nailing required
- ✓ Eliminate ugly dry wall bump
- ✓ Burmon Bracket has higher capacities than ordinary connectors
- ✓ All Fasteners supplied in box
- ✓ 2010 lbs of Uplift Capacity

HURRICANE ANCHOR FOR ICF SINGLE SILL PLATE CONNECTION TO TRUSS/RAFTER

TECHNICAL INFORMATION

BURMON STOCK CODE **BHBSP**

SPECIFICATION

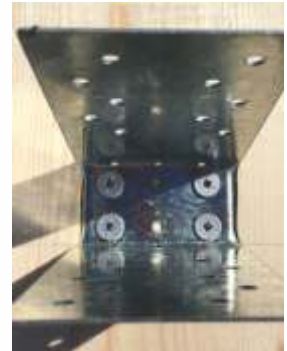
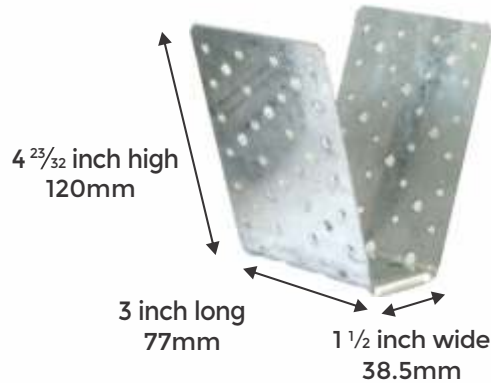
STEEL

Gauge
Corrosion Finish

18
G90

SCREWS

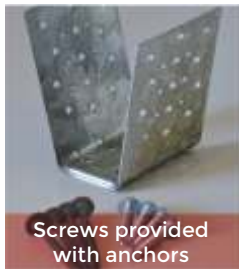
Burmon screws
comply to 1000 hours
Salt Spray Testing



EASY TO INSTALL

1

POSITION



Screws provided
with anchors

Position BHB anchor
at the set out point
on the top plate.

2

FIX



Screw fix BHB anchor to
top plate with Burmon
screws

3

SECURE



Screw fix roof
truss/rafter each side to
BHB anchor using
Burmon screws

LOAD TABLE

Please note: these are single plate numbers.

| Burmon Stock No. | Ref No. | Steel Gauge | FASTENER SCHEDULE | | | | Installation type | DF/SP Allowable Load (lbs) ¹ | | | S-P-F Allowable Load (lbs) ¹ | | | Corrosion Finish |
|------------------|---------|-------------|-------------------|-------|--------------|-------|-------------------|---|-------------|-----------------|---|-------------|-----------------|------------------|
| | | | Truss/Rafter | | Single Plate | | | Number of Anchors | Uplift 160% | Lateral F1 160% | Lateral F2 160% | Uplift 160% | Lateral F1 160% | |
| BHBSP | BHB | 18 | 6 | BHH39 | 4 | BSD39 | SINGLE ANCHOR | | | | | | | 1340 |
| | | | 3 each side | | | | | | | | | | | |
| BHBSP | BHB | 18 | 8 | BHH39 | 6 | BSD39 | SINGLE ANCHOR | 2010 | 1145 | 924 | 1567 | 893 | 720 | G90 |
| | | | 4 each side | | | | | | | | | | | |

- Allowable loads have been increased 60% for wind and seismic loads, no further increase shall be permitted.
- Minimum quantity of fasteners to be installed. Product has additional screw holes not needed to meet published allowable load of product.
- To view code report, please visit our website www.burmon.com/code-reports or visit the code evaluation agency's website.