



Home Stretch™

Peel 'N Stick Membrane

Product Information Sheet

Poly Wall® Building Solutions is an innovator of high-quality, cost-effective, engineered Building Materials. We stand behind our brand promise — Moisture and Air Stop Here.® Visit our website at www.poly-wall.com for the full array of product offerings.

DESCRIPTION

Poly Wall® Home Stretch™ Peel 'N Stick Membrane is specifically designed and engineered for use with Insulated Concrete Forms (ICF) technology. It is also an excellent choice for use on poured concrete foundation walls, Concrete Masonry Unit (CMU) walls and related applications where waterproofing is critical or positive-side hydrostatic pressure is present. Home Stretch Peel 'N Stick is a self-adhering sheet waterproofing membrane 40 mils thick which consists of a strong, pliable, high density polyethylene (HDPE) facing bonded to a rubberized asphalt waterproofing compound that has been proven over many years of use to be supremely effective waterproofing. Home Stretch Peel 'N Stick is available in easy to handle and install 36" wide by 66.7' long rolls (200 sf / roll) with a disposable treated release liner. Home Stretch Detail Tape, Home Stretch WB Liquid Adhesive (ICF primer), Polybond Clear Liquid Adhesive (concrete and CMU primer), Blue Barrier Joint Filler 2200, Arroyo Drainboard and Arroyo Drainboard accessories are available to complete a full waterproofing system.

ADVANTAGES

- Factory controlled 40-mil uniform and consistent thickness.
- Side lap design delivers increased watertightness.
- Extended selvage edge provides asphalt-to-asphalt adhesion at the seam.
- Appropriate for use with both Expanded and Extruded Polystyrene ICF Systems.
- High Tensile Strength with terrific flexibility.

INSTALLATION

The **sequence** of installation is:

- Be sure all ICF surfaces are clean and dry.
- Minor voids, gaps, concrete honeycombing, control joints, etc. are to all be filled and sealed with Poly Wall Blue Barrier Joint Filler 2200 to provide a flush and level plane for the application of the Home Stretch Membrane.
- Apply Poly Wall Blue Barrier Joint Filler 2200 sealant as a 3/4-inch fillet where the (ICF) or concrete wall creates a joint at the footer.
- Use Poly Wall Polybond Clear Liquid Adhesive or Poly Wall Home Stretch WB Liquid Adhesive as membrane primer for cast-in-place concrete walls, concrete masonry (CMU) walls, or precast concrete foundation walls. Use only Poly Wall Home Stretch WB Liquid Adhesive as membrane primer over insulated concrete form (ICF) walls.
- Apply Poly Wall Home Stretch Detail Tape over the Blue Barrier Joint Filler 2200 as sheet flashing.
- Starting at bottom align and apply first vertical piece of Home Stretch Peel 'N Stick Membrane on wall. Apply subsequent pieces on and along the remainder of the wall. Roll to remove air pockets.
- Apply and tool Poly Wall Blue Barrier Joint Filler 2200 sealant along all Home Stretch Peel 'N Stick Membrane exposed edges to provide an waterproofing membrane edge seal. Apply and tool Poly Wall Blue Barrier Joint Filler 2200 sealant over and along the Home Stretch Peel 'N Stick Membrane top termination.
- Apply and tool Poly Wall Blue Barrier Joint Filler 2200 around all clean and dry penetrations, extend the Blue Barrier Joint Filler 2200 material a minimum 3" onto the wall surface and a minimum 3" onto the penetrating item.
- Apply Poly Wall Arroyo Drainboard and Arroyo Drainboard accessory materials for drainage and protection of your Home Stretch Peel 'N Stick Membrane sheet waterproofing system.

WHY USE POLY WALL® HOME STRETCH™ PEEL 'N STICK?

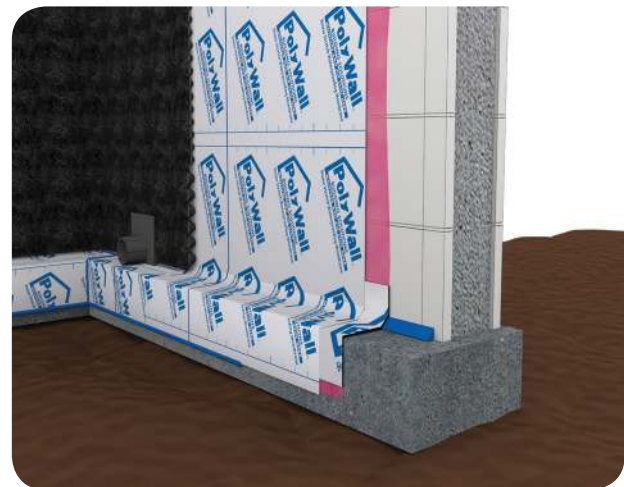
- 60+ years of successful waterproofing experience
- Superior waterproofing protection of your ICF, poured concrete, or CMU foundation wall
- Superior durability, puncture resistance and tensile strength
- Works right away upon installation, don't have to wait for product to cure for waterproofing to be effective
- Cleaner than liquid products and safer than torch-applied sheet goods
- Complete line of complimentary products to provide a complete foundation wall waterproofing system to confidently complete your project
- Poly Wall is an employee owned company, where employees expect more of themselves and the company
- Made in the USA

STORAGE

Membrane and accessories should be unloaded and stored carefully. Protect cartons and containers from weather, sparks, flames, excessive heat, cold and lack of ventilation. DO NOT stack membrane material higher than 5-feet vertically, nor double stack pallets. Store cartons on pallets and cover to prevent water damage. For best results, store membrane above 50° (10°C) prior to application.

LIMITATIONS

- Make sure caulks, and sealants which might come into contact with the adhesive portion of rubberized asphalt do not contain plasticizers or solvents. This includes most polyurethane and silicone caulks
- Good practice calls for membrane to be covered within 30 days of installation
- Adhere to minimum cure time requirements of sealants when applying to polystyrene foam
- Prohibit flames, sparks, welding and smoking during application



**SCAN HERE FOR INFORMATION
ON LIQUID APPLIED HOME
STRETCH WATERPROOFING FOR
CMU & POURED
CONCRETE WALLS**



POLY WALL® BUILDING SOLUTIONS:
Moisture and Air Stop Here®
888-976-POLY (7659) • www.poly-wall.com





LIMITED WARRANTY: We, the manufacturer, warrant only that this product is free of defects, since many factors which affect the results obtained from this product are beyond our control; such as weather, workmanship, equipment utilized and prior condition of the substrate. We will replace, at no charge, proven defective product within twelve (12) months of purchase, provided it has been applied in accordance with our written directions for uses we recommended as suitable for this product. Proof of purchase must be provided

Home Stretch Peel 'N Stick Membrane Properties

PROPERTY	TEST METHOD	TYPICAL VALUE
Thickness		40 mils
Application Temp.		25°F and above
Elongation	ASTM D412	300%
Tensile Strength (Membrane)	ASTM D412-modified	325 psi
Tensile Strength (Film)	ASTM D882	3900 psi (26.9 Mpa)
Peel Strength	ASTM D903	9 lbs/in (1576 N/m)
Minimum Puncture Resistance - Membrane	ASTM E154	50 lbs
Flexibility at -22°F	ASTM D1970	Pass
Water Vapor Transmission	ASTM E96	0.02 perms (1.14 ng/Pa.s.m ²)
Lap Peel Strength @ 41°F	ASTM D1876	3.3 lbf/in (580N/m)
Hydrostatic Head	ASTM D5385	231 feet (60 m of water)
Moisture Absorption	ASTM D570-81	0.1% maximum

ROLL SIZE	ROLLS/BX	SF PER BOX	LBS/BOX	BOXES/PALLET
36" X 66.7'	1	200 ft.	50	36

INSTALLATION GUIDELINES FOR POLY WALL® HOME STRETCH™ PEEL 'N STICK MEMBRANE ON A ICF (INSULATED CONCRETE FORM) SYSTEM

The installation guidelines provided below are not intended to be full and complete application instructions.

For full Home Stretch application instructions scan here



STEP 1 - Clean & Prepare Foundation Wall Surfaces

- A. Clean ICF with Stiff Broom.
- B. Power wash hard to remove debris and expanded polystyrene dust if any.
- C. Fill in any cracks or indentations with Poly Wall Blue Barrier Joint Filler 2200 sealant.
- D. Prime ICF surfaces with Poly Wall Home Stretch WB Liquid Adhesive.

STEP 2 - Detail Footing & Wall

- A. Apply a 3/4" fillet of Poly Wall Blue Barrier Joint Filler 2200 on inside corners and at the vertical wall/footer interface.
- B. Prior to Poly Wall Home Stretch Detail Tape being applied, prepare ICF wall surface at corners and footer with Poly Wall Home Stretch WB Liquid Adhesive at a rate of 350-400 SF/gallon.
- C. Apply 12" wide Poly Wall Home Stretch Detail Tape vertically on inside/outside corners and horizontally on the footer itself.

STEP 3a - Install Corners (Outside Corners)

- A. Cut and fit a piece of 12" membrane to outside corner. Apply over ICF prepared with Poly Wall Home Stretch WB Liquid Adhesive at a rate of 350-400 sf/gallon.
- B. Apply Poly Wall (PW) Blue Barrier Joint Filler 2200 sealant to all cut edges & terminators on membrane.

STEP 3b - Install Corners (Inside Corners)

- A. Apply a 3/4" fillet of Poly Wall Blue Barrier Joint Filler 2200 sealant both vertically and horizontally at corners of ICF.
- B. Allow 2 hours before application of Poly Wall Home Stretch Peel 'N Stick Membrane field sheet.

STEP 4a - Apply Home Stretch Peel 'N Stick Membrane

- A. Starting from the lower foundation base and rising to the top of the wall, come over and above the wall by 6".
- B. If you choose to terminate the membrane on the vertical surface apply a termination bar (supplied by others). Firmly press the termination edge with hand roller and protect with a generous bead of Poly Wall Blue Barrier 2200 Joint Filler.
- C. Align & apply first roll of membrane starting on one end, align subsequent rolls, maintain a min of 2 1/2" side laps and 4" on staggered end laps.
- D. Apply membrane from top of the wall over the edge of the footing at the foundation base.
- E. Use heavy hand pressure while smoothing out the membrane surface as its applied - roll installed membrane with a hand roller to complete bond.

STEP 5 - Finish & Protect Home Stretch Peel 'N Stick Membrane

- A. Apply Poly Wall Blue Barrier 2200 at all terminations and cut membrane.
- B. Install protection board (Arroyo Drain Board or by others) as required. Apply with "spot" adhesive compatible with polyethylene surfaces and the protection board you select.

STEP 6 - Back Fill

- A. No waiting is necessary before backfilling.
- B. Fill material should be free of large clumps, rocks, tree roots, and debris.
- C. Place backfill in no more than 12" lifts and mechanically compact to 90% proctor.
- D. Completely cover exposed Home Stretch Peel 'N Stick Membrane with fill material. In case of additional exposed membrane, cover with suitable protection course or veneer products such as Architectural Stone.

POLY WALL BUILDING SOLUTIONS:
Moisture and Air Stop Here®
 888-976-POLY (7659) • www.poly-wall.com